

DUMA 杜马

POWER 系列

双步进智能平缝机

Double Step Smart Lockstitch Machine

1968BIU



匠心制作, 所以精致

Crafty, so exquisite

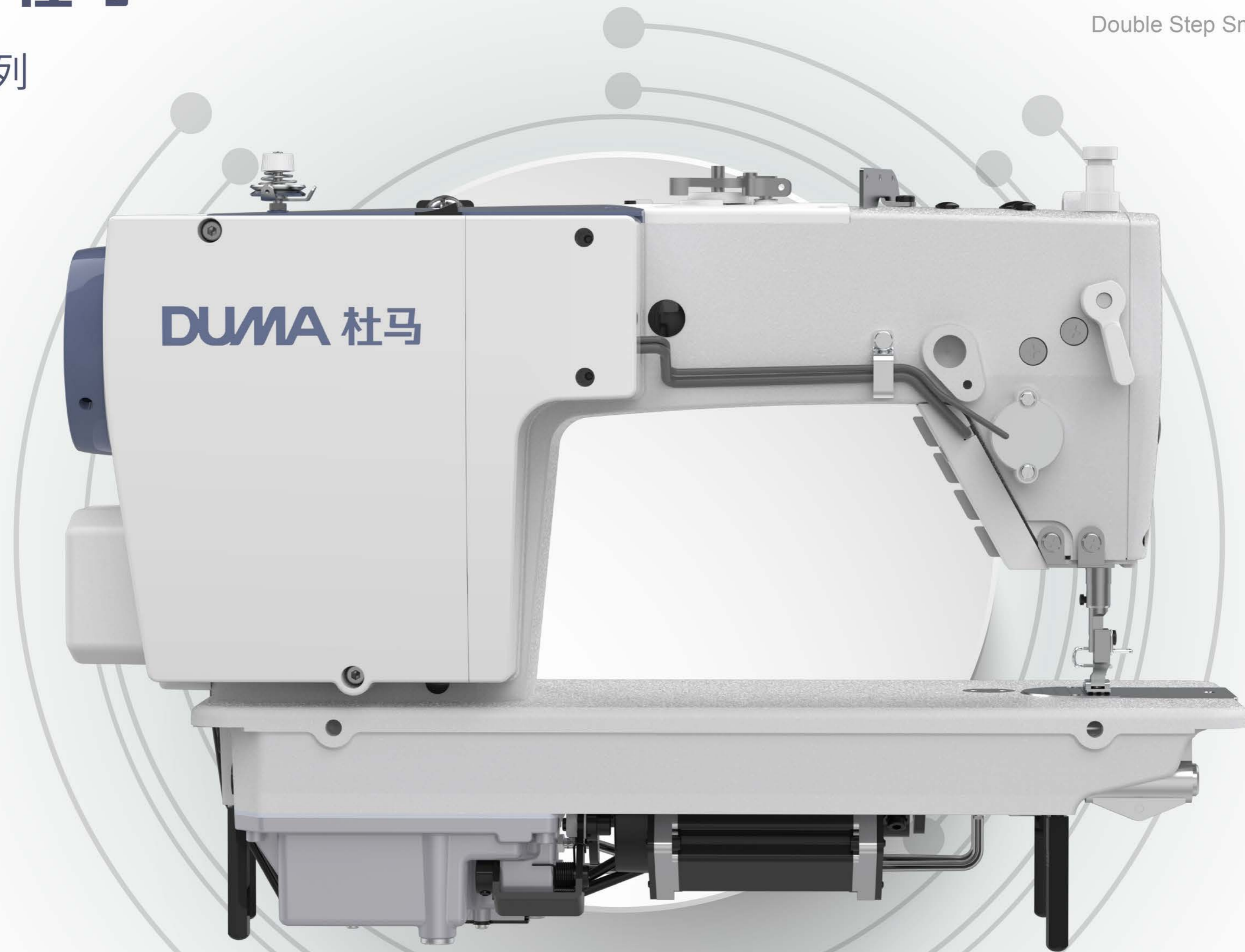
DUMA 杜马

POWER 系列

双步进智能平缝机

Double Step Smart Lockstitch Machine

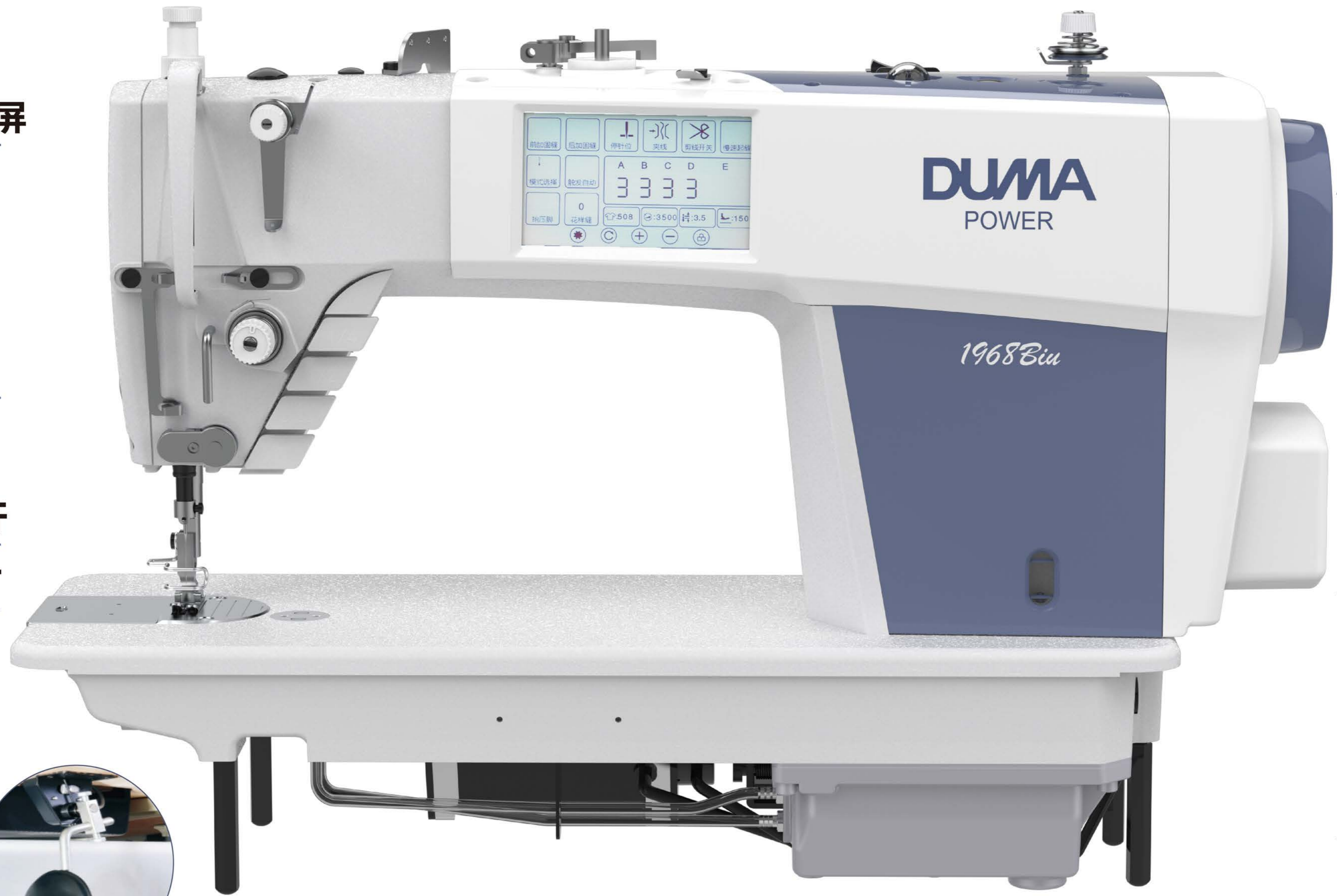
1968BIU



匠心制作, 所以精致

Crafty, so exquisite

1968BIU基本配置



4.3寸液晶屏

四键按键

超耐磨针杆

LED照明灯

电子膝靠



通轴传动

可视油窗

密封油盒

■ 超耐磨针杆

DLC needle bar

采用黑金刚针杆，可有效减少漏油并极大限度延长使用寿命。

Adopt DLC needle bar, reduce oil leakage and greatly extend using life.

■ LED照明灯

LED light

触手可及，亮度可调。

Convenient & with adjustable brightness.

■ 四键按钮

Four buttons

配有四个按键，方便进行加固、补针(补1针，补1/2针，1/4针)倒缝操作。

With four button it is convenient to reinforce and bartacking, fill needle(1,1/2,1,4).

■ 4.3寸液晶屏

4.3 inch LCD screen

液晶显示触摸屏功能齐全，操作简便明了。

The LCD touch screen has complete functions and the operation is simple and clear.

■ 密封油盒

Sealed oil tank

清洁缝纫, 避免油污造成的缝料污染, 同时可减小整机运作时的噪音;

Cleaning sewing, it avoid cloth dirty from oil, meantime reduce noisy when machine working.

■ 可视油窗

Visual oil window

可以确认油的剩余用量。

It's easy to confirm the amount of the remaining oil.

■ 电子脚靠

Electronic footrest

不改变工人的操作习惯, 实现轻松抬压脚。

It is easy to lift the presser foot and no need to change worker's sewing habit.



DM1968Biu (DB×1)#7~#16

0-6

6-10

★

★

★

★

-

★

★

★

5000

620x280x545

44.1/38

1968BIU性能展示



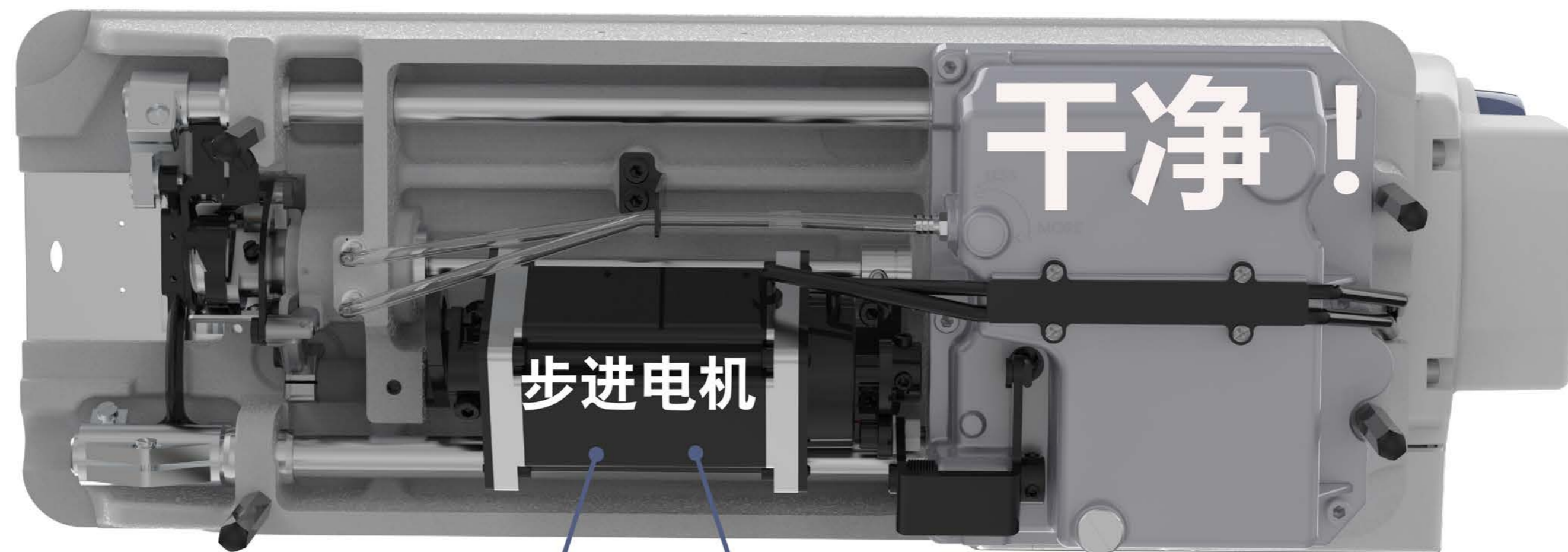
Step motor bidirectional driven technology (patent):

(专利技术) : 一个马达完成切线和抬压脚动作。

One step motor control trimming and pressing foot lifter work .

可靠的切线机构：采用步进马达驱动，结构简单、切线稳定，声音轻柔；

The unique thread trimmer device: Adopt step motor to drive, stable, light noise and convenience on maintenance.

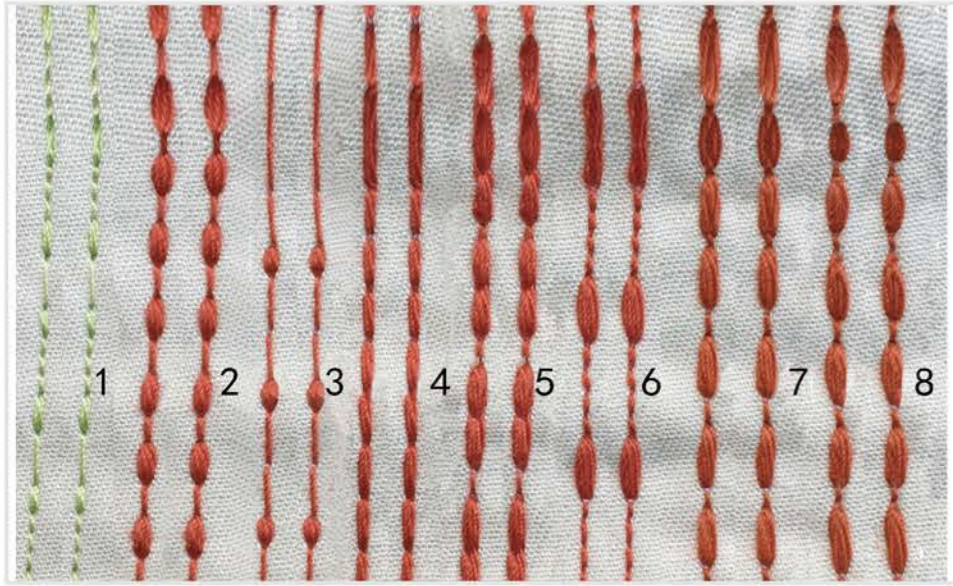


剪线

Trimming

抬压脚

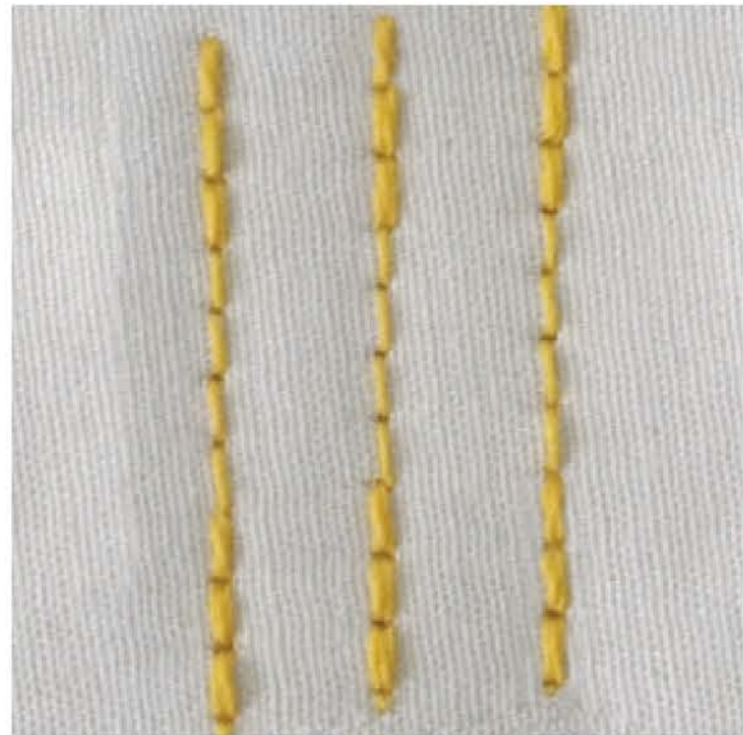
Presser foot up/down



①

花样缝：由于步进马达控制,1968BIU可以自己设定产生8种不同线迹,精准的送料行程,可以实现针迹重合的加固缝.

Due to the stepping motor control, the 1968BIU can be set to produce 8 different stitches. Accurate feeding stroke can realize reinforcement seam with overlapping stitches.



②

前后密针缝：缝制起始/终止端锁小针距线迹,有效缩短留在缝料.上的线头长度,防止线头散出.

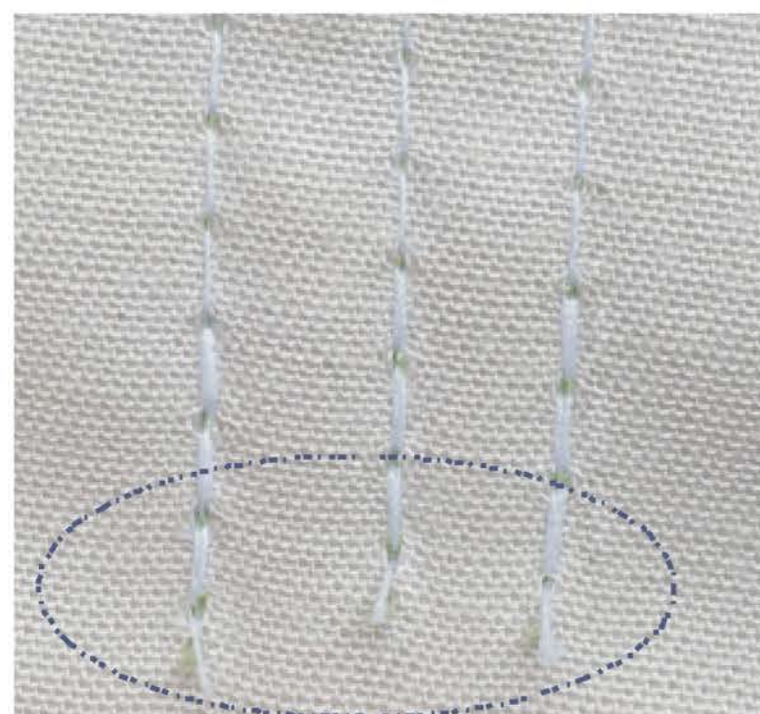
With the function of locking for start and after trimming, effectively shorten the stitch length, prevent off-thread



③

短线头：采用电机驱动的双动刀剪线机构,可在机针正下方完成剪线缝纫后的线头最短可达3mm,可有效减少人工剪线的工作量。

Double round knife trimmer system, thus realized after trimmer the thread $\leq 3\text{mm}$.



④

起缝小鸟巢不脱线：步进驱动的切线机构,加上优化的切刀机构,可以使留在针上的线头长度既短又稳定,使第二次起缝时的鸟巢明显变小,且不脱线,实现无需人工再处理的漂亮缝纫品质。

Small bird nest: Using the unique trimmer device to achieve small bird nest. Step motor trimming system that make the thread short and stable.

NEW SERIES FULL OF POWER

Inspired and unique design appearance
with excellent practical performance.



國貨必須
自強 



浙江省台州市椒江区机场南路58号
No. 58, Airport South Road, Jiaojiang District,
Taizhou City, Zhejiang Province



电话/Tel: +86-576-89086976/86
传真/Fax: +86-576-89086979



网络/Web: www.cnduma.com
E-mail: sales@cnduma.com