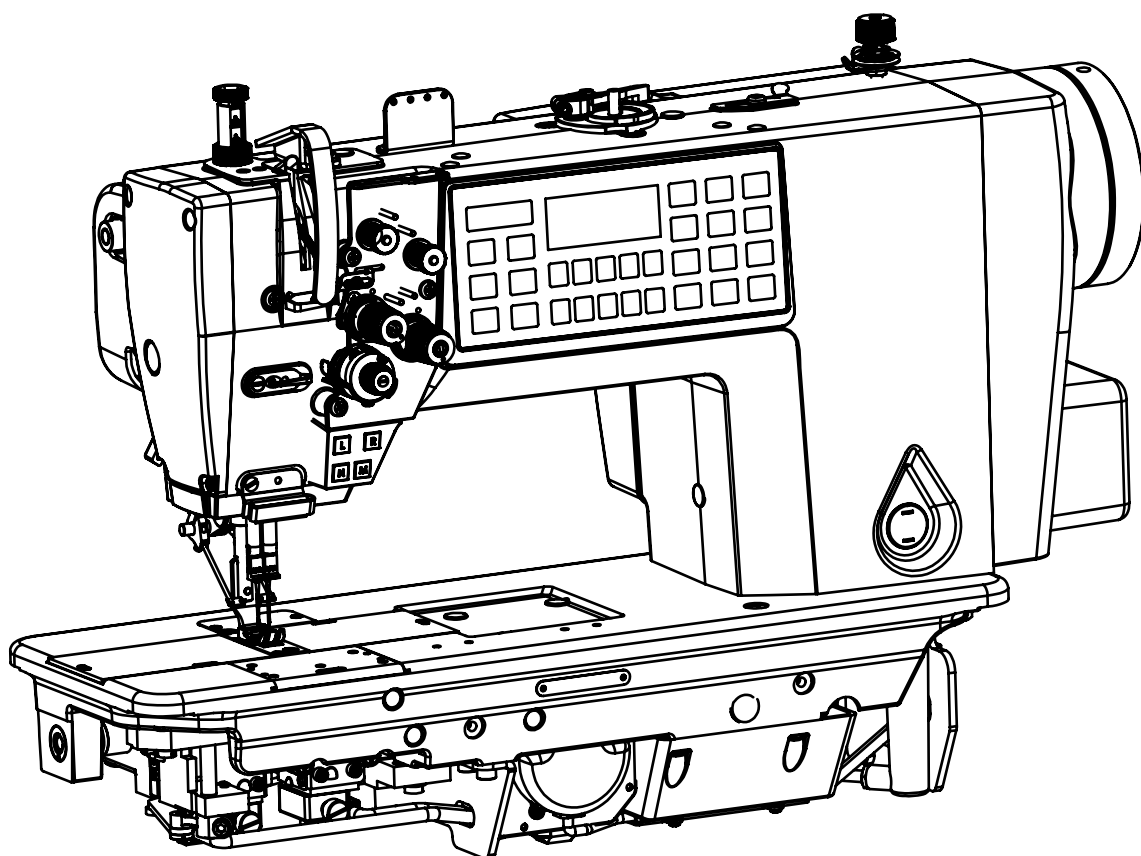


零件手册

PARTS MANUAL

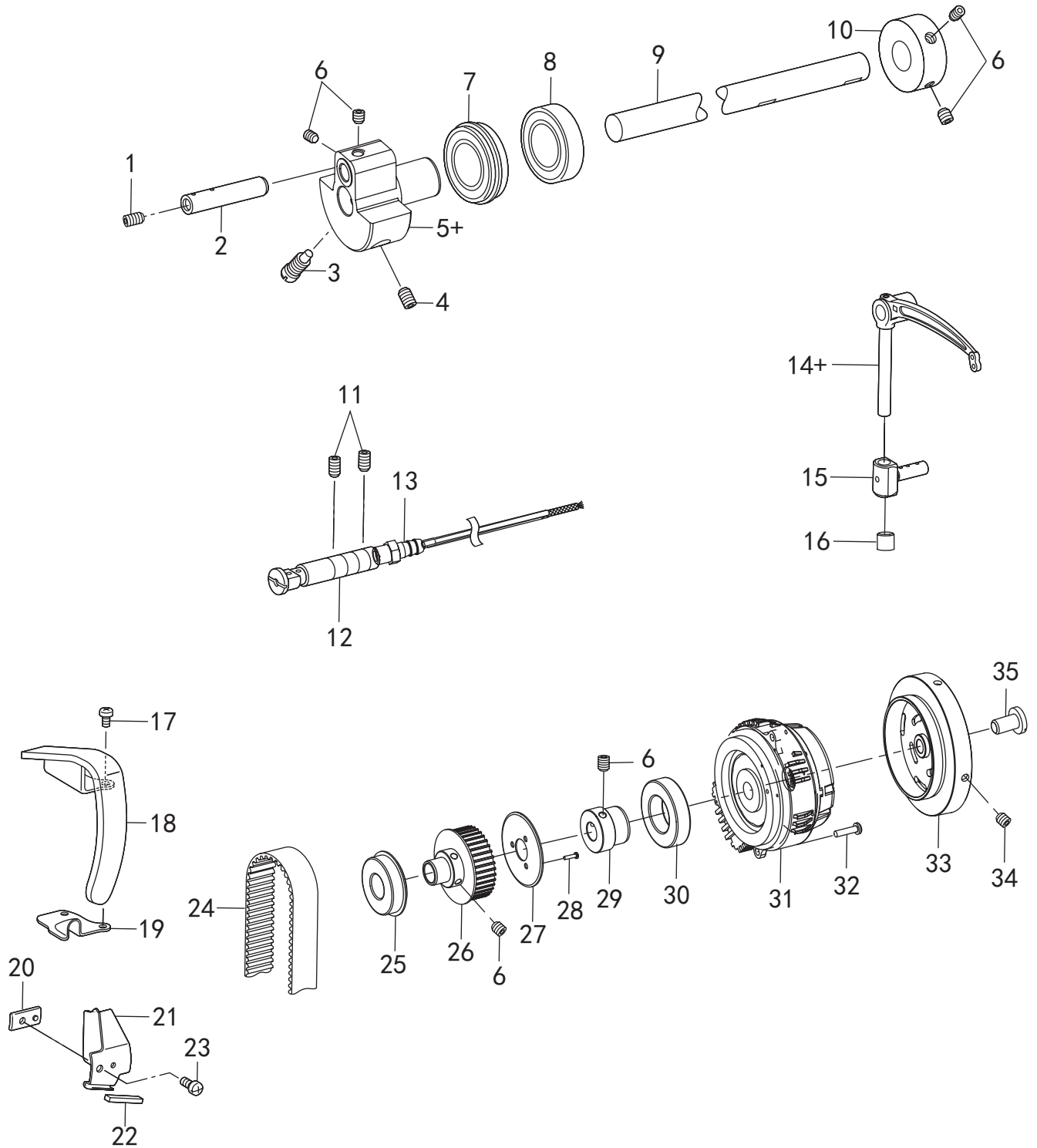
双针直驱平缝机

TWIN NEEDLE DIRECT DRIVE LOCK STITCHER



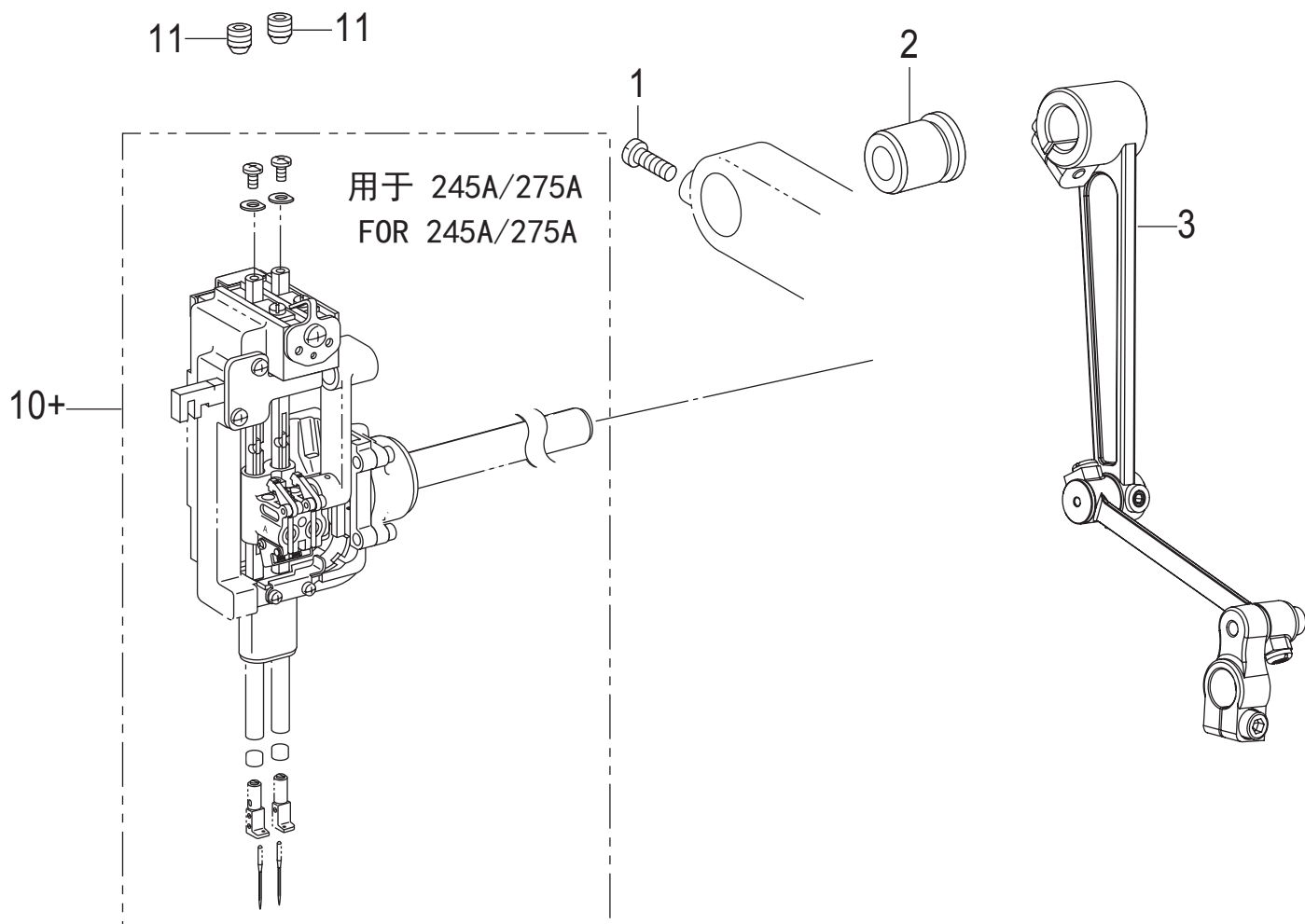
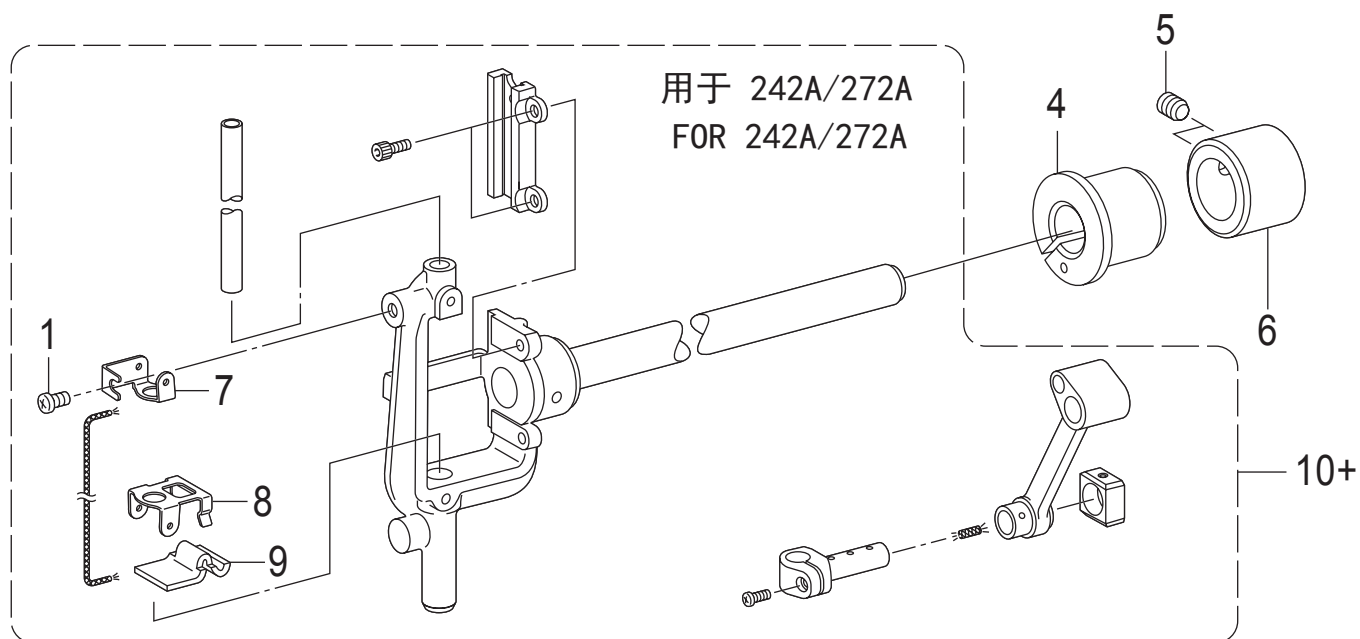
序号	图号	数量	零件名称	NAME OF PARTS
1	062351212	4	螺钉M3.5×12	SCREW PAN M3.5×12
2	115010701	3	橡皮塞 15.5	RUBBER CAP 15.5
3	124010301-1	1	面板	FACE PLATE
4	062501016	11	螺钉M5×10	SCREW PAN M5×10
5	124010402	1	机头灯组件	HEAD LAMP ASSY
6	125080401	2	螺钉M3×6	SCREW PAN M3×6
7	124012501	1	后推板	SLIDE PLATE
8	124011301	1	针板定位销	POSITIONING PIN
9	115011001	2	橡皮塞 10.5	RUBBER CAP 10.5
10	115010401	1	后盖板	REAR COVER
11	101011001	1	橡皮塞 12.5	RUBBER CAP 12.5
12	124011201	1	电机罩	MOTOR COVER
13	018502032	4	螺钉M5×20	SCREW PAN M5×20
14	018061232	5	螺钉M6×12	SCREW PAN M6×12
15	124011902	1	左支撑板	SUPORRT PLATE L
16	115012701	3	橡皮塞 8.5	RUBBER CAP 8.5
17	124012001	1	右支撑板	SUPORRT PLATE R
18	124011401	1	推板L	SLIDE PLATE L
19	124011501	1	推板R	SLIDE PLATE R
20	124012601	1	螺钉SM5.16	SCREW PAN SM5.16
21	124013001	1	推板F	SLIDE PLATE F

2. 上轴装置/Shaft mechanism



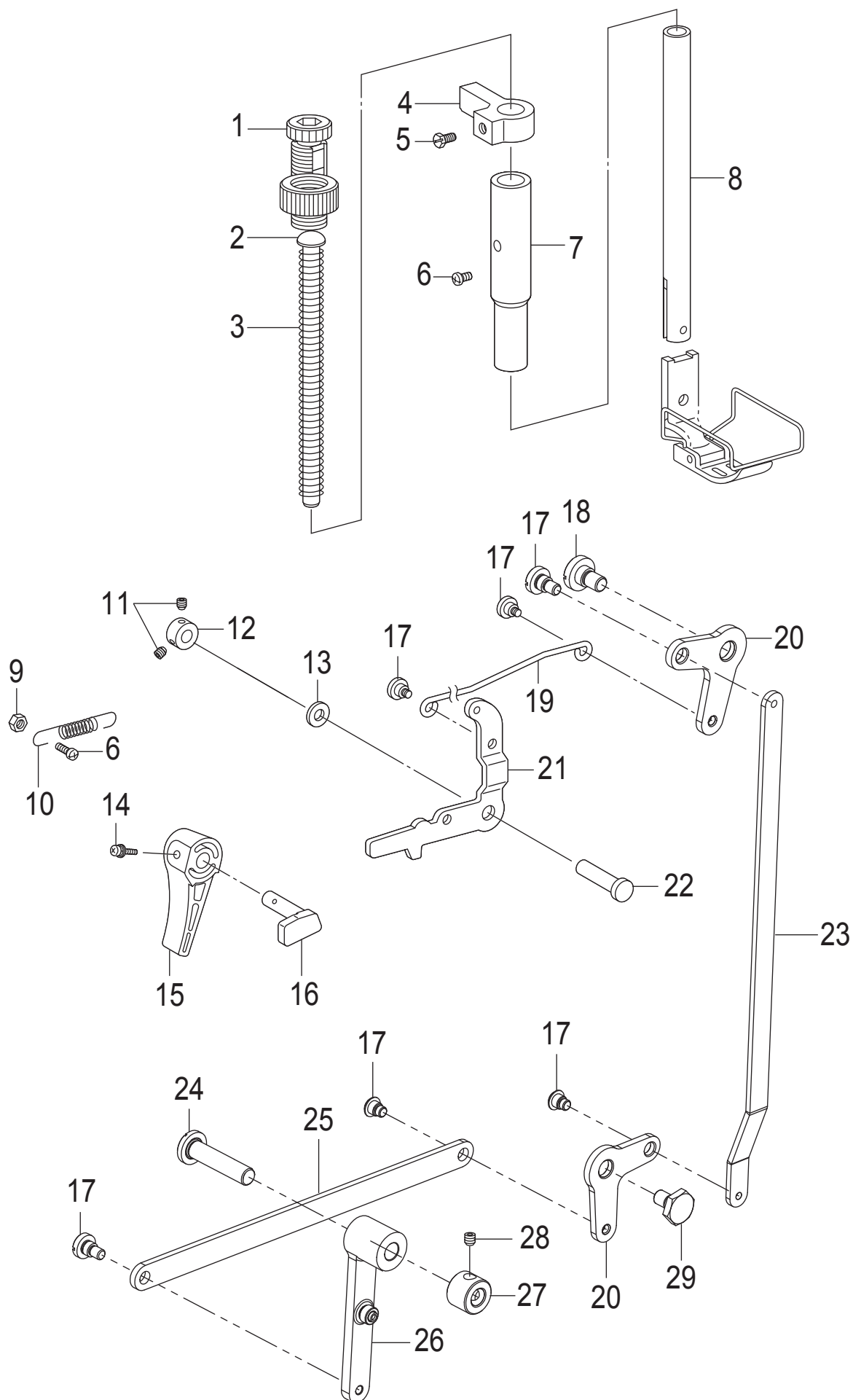
序号	图号	数量	零件名称	NAME OF PARTS
1	012500536	1	螺钉M5×5	SCREW PAN M5×5
2	124020201	1	针杆曲柄轴	CRANK SHAFT
3	124020301	1	针杆曲柄螺钉M8	SCREW PAN M8
4	014601016	1	螺钉M6×0.75-10	SCREW PAN M6×0.75-10
5+	124020502	1	针杆曲柄(242A/272A)	THREAD TAKE-UP CRANK
5+	125020502	1	针杆曲柄(245A/275A)	THREAD TAKE-UP CRANK
6	012600636	9	螺钉M6×0.75-6	SET SCREW PAN M6×0.75-6
7	115024501	1	轴承6004ZZNR	BALL BEARING 6004ZZNR
8	124020801	1	轴承6004ZZ	BALL BEARING 6004ZZ
9	124020903	1	上轴DD	UPPER SHAFT DD
10	115021201	1	卷线驱动轮	BOBBIN WINDER DRIVING WHEEL
11	012060832	4	螺钉M6×8	SCREW PAN M6×8
12	124021301	1	挑线杆支撑轴	THREAD TAKE-UP S-SHAFT UNIT
13	124024001	1	油嘴	NOZZLE
14+	124021401-1	1	挑线杆S5(242A/245A)	T-TAKE-UP LEVER ASSY S5-L
14+	125021401	1	挑线杆R(272A/275A)	T-TAKE-UP LEVER ASSY L5-L
15	124021501	1	挑线杆接头滑块3	T-TAKE-UP SLIDE BLOCK ASSY 3
16	124023901	1	橡皮塞4.2	CAP 4.2
17	062500816	2	螺钉M5×8	SCREW PAN M5×8
18	124021701	1	挑线杆防护罩	THREAD TAKE-UP LEVER COVER
19	124021801	1	防尘盖	DUST COVER
20	124021901	1	遮掩板支座	HOLDER, SHELTER PLATE
21	124022001	1	遮掩板	SHELTER PLATE
22	124022101	1	油毡	FELT
23	062501016	1	螺钉M5×10	SCREW PAN M5×10
24	124022301	1	同步皮带	TIMING BELT
25	124022401	1	轴承6204ZZNR	BALL BEARING 6204ZZNR
26	124022601	1	同步轮 U	TIMING PULLEY U
27	124022701	1	同步轮U法兰	PULLEY U FLANGE
28	062400616	3	螺钉M4×6	SCREW PAN M4×6
29	124022901	1	轴承套	BEARING SLEEVE
30	124023001	1	轴承6006ZZ	BALL BEARING 6006ZZ
31	124025102	1	马达组件	SERVO MOTOR ASSY
32	018502036	3	螺钉M5×20	SCREW PAN M5×20
33	124025202	1	手轮	HAND WHEEL ASSY
34	014760832	2	螺钉SM5.95×28-8	SCREW PAN SM5.95×28-8
35	115025401	1	螺钉SM8.37	SCREW PAN SM8.37

3.针杆摆动装置/Needle bar rocking mechanism



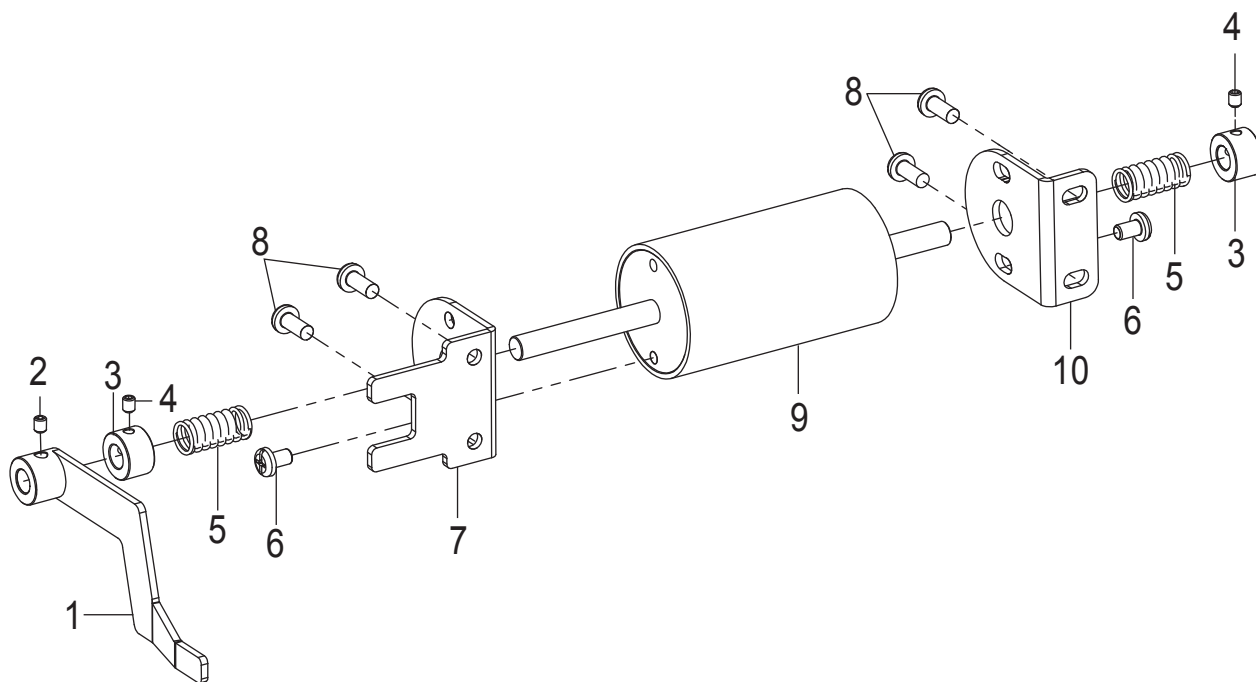
序号	图号	数量	零件名称	NAME OF PARTS
1	062500616	2	螺钉M5×6	SCREW PAN M5×6
2	124030301	1	摆动轴轴套R	BUSH R
3	124030401	1	针杆摆动大组件	NEEDLE BAR ROCKER LEVER
4	124031501	1	轴套L	BUSH L
5	012600636	2	螺钉M6×0.75-6	SCREW PAN M6×0.75-6
6	124031701	1	紧圈	SET SCREW COLLAR
7	124031901	1	油毡上支架U	LINOLEVM BRACKET U
8	124032001	1	油毡下支架D	LINOLEVM BRACKET D
9	124032101	1	油毡	FELT
10+	124031801	1	针杆支架组件(242A)	NEEDLE BAR ROCKER SHAFT UNIT
10+	125031801	1	针杆支架组件(245A)	NEEDLE BAR ROCKER SHAFT UNIT
11	014080832	2	螺钉M8×8	SCREW PAN M8×8

4.压脚装置/Presser foot mechanism



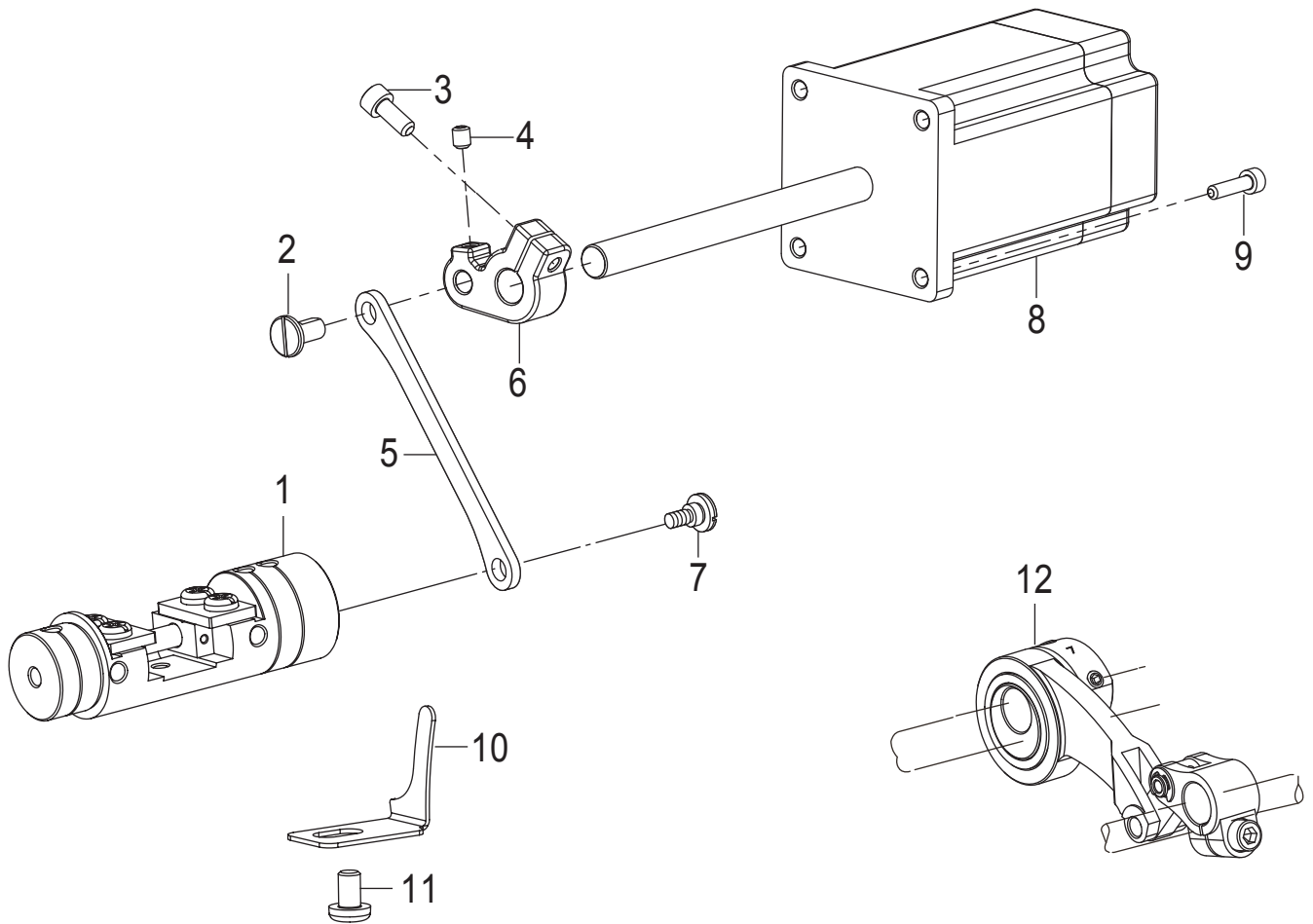
序号	图号	数量	零件名称	NAME OF PARTS
1	124050101	1	调节螺栓M14	PRESSER ADJUSTING SCREW M14
2	115030401	1	弹簧导杆	SPRING GUIDE
3	124050401	1	压紧弹簧	PRESSER BAR SPRING
4	124050501	1	压紧紧导架	GUIDE BRACKET P-BAR
5	124050601	1	螺栓M6	BOLT (CP) M6
6	062501016	2	螺钉M5×10	SCREW PAN M5×10
7	124050801	1	压杆轴套	PRESSER BAR BUSH
8	124050901	1	压紧杆	PRESSER BAR
9	021500212	1	螺母M5	NUT M5
10	124051301	1	弹簧	SPRING
11	012500536	2	螺钉M5×5	SCREW PAN M5×5
12	124051101	1	紧圈	SET SCREW COLLAR
13	124051801	1	垫圈	WASHER PLAIN
14	115032001	1	螺钉M3.5×12	LIFTING LEVER
15	115031901	1	抬压脚扳手	PRESSER BAR LIFTING CRANK
16	124051701	1	压杆提升曲柄	WASHER PLAIN
17	115034301	6	段螺钉M5	SHOULDER SCREW M5
18	115034501	2	段螺钉SM6.35×28	SHOULDER SCREW SM6.35×28
19	124052201	1	膝控连杆	KNEE LIFTER CONNECTING ROD
20	169032101	2	膝控提升杠杆	KNEE LIFTER LEVER
21	124052001	1	抬压脚连杆	PRESSER BAR LIFTING LEVER
22	124052101	1	提升杠杆销	P-BAR LIFTING LEVER SHAFT
23	124052601	1	膝控提升拉杆	KNEE LIFTER BAR
24	124052902	1	抬牙曲柄连杆销	PIN
25	124052701	1	膝控提升短连杆	KNEE LIFTER SHORT BAR
26	124052802	1	抬牙曲柄连杆组件	P-BAR LIFTER CRANK LEVER
27	115072001	1	紧圈	SET SCREW COLLAR
28	014770632	2	螺钉SM6.35×40-6	SCREW SM6.35

5.针杆切换操作装置/Needle bar rocking mechanism



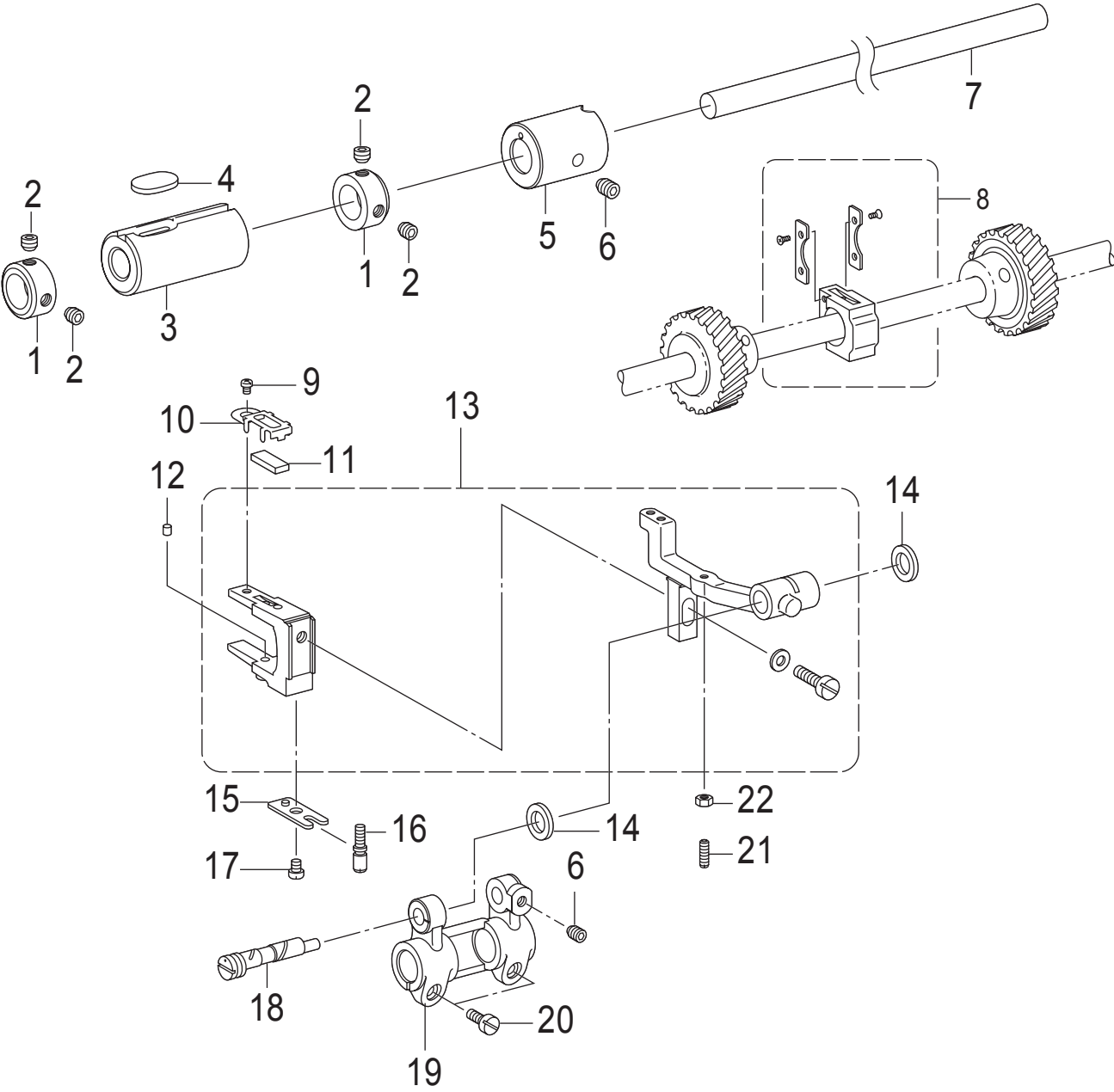
序号	图号	数量	零件名称	NAME OF PARTS
1	125040101	1	分离板	SEPARATION PLATE
2	012500536	2	螺钉 M5×5	SCREW PAN M5×5
3	125040301	2	紧圈	SET SCREW COLLAR
4	012400532	4	螺钉M4×5	SCREW PAN M4×5
5	125040401	2	弹簧	SPRING
6	062500616	4	螺钉 M5×6	SCREW PAN M5×6
7	125040501	1	电磁铁安装板左	SOLENOID SETTING PLATE L
8	062501016	4	螺钉 M5×10	SCREW PAN M5×10
9	125040801	1	分离电磁铁组件	SEPARATING ELECTROMAGNET
10	125040901	1	电磁铁安装板右	SOLENOID SETTING PLATE R

6.送布装置/ Feed mechanism



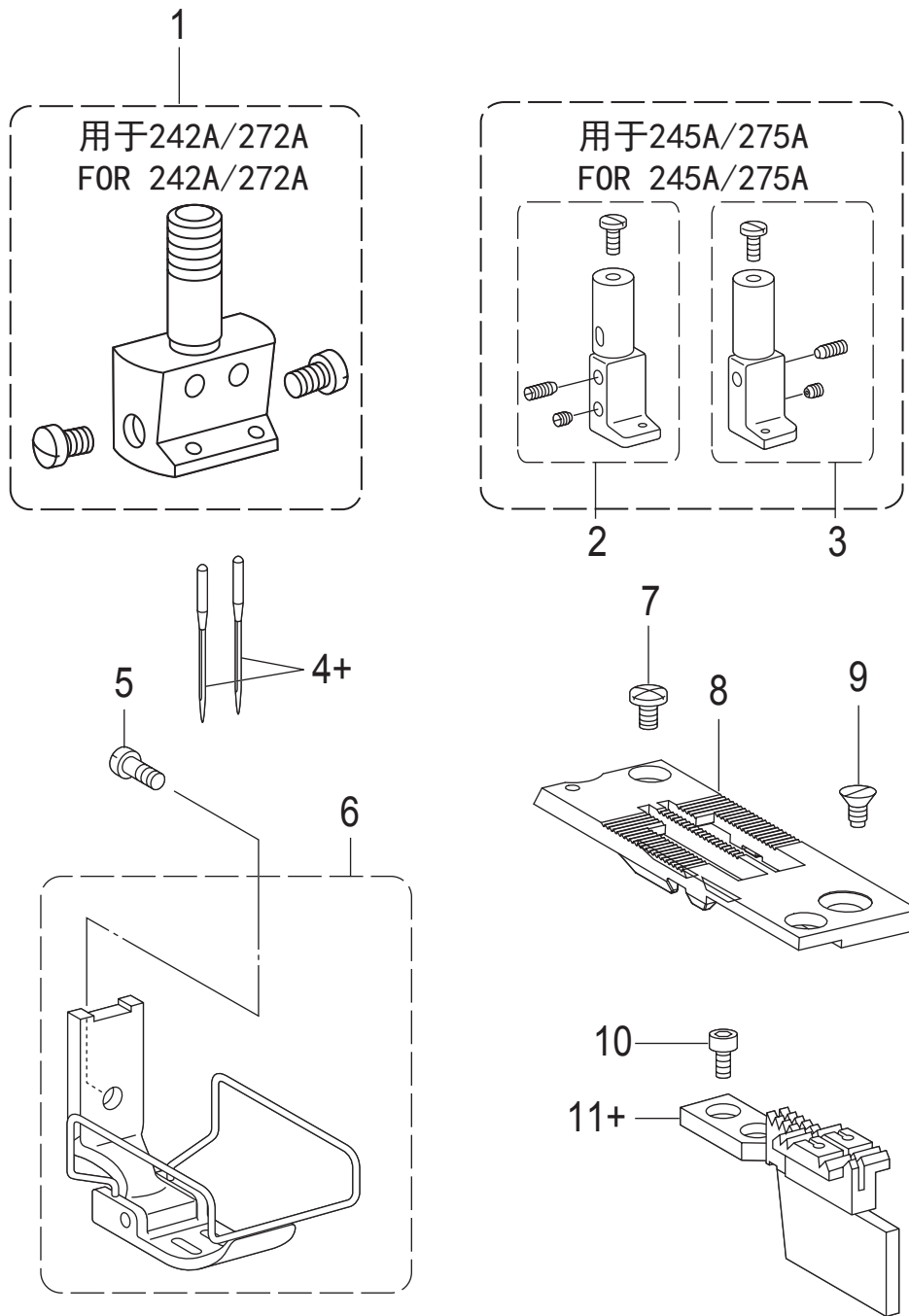
序号	图号	数量	零件名称	NAME OF PARTS
1	124061101	1	切换器组件	FEED REGULATOR ASSY
2	124061201	1	偏心轴	ECCENTRIC SHAFT
3	018501236	1	螺钉M5×12	SCREW PAN M5×12
4	012500632	1	螺钉M5×5	SCREW PAN M5×5
5	124061301	1	切换器连杆	CONNECTING ROD
6	124061501	1	送料调节曲柄	FEED REGULATOR
7	124061401	1	轴位螺钉M6	SHOULDER SCREW M6
8	124061803	1	倒缝电机	REVERSE SWITCH MOTOR
9	018401632	4	螺钉M4×16	SCREW PAN M4×16
10	124062001	1	切换器定位	STOPPER
11	062500616	1	螺钉M5×6	SCREW PAN M5×6
12	124061601	1	送布大组件	DISTRIBUTION MODULE

7.送布轴装置/Feed shaft mechanism



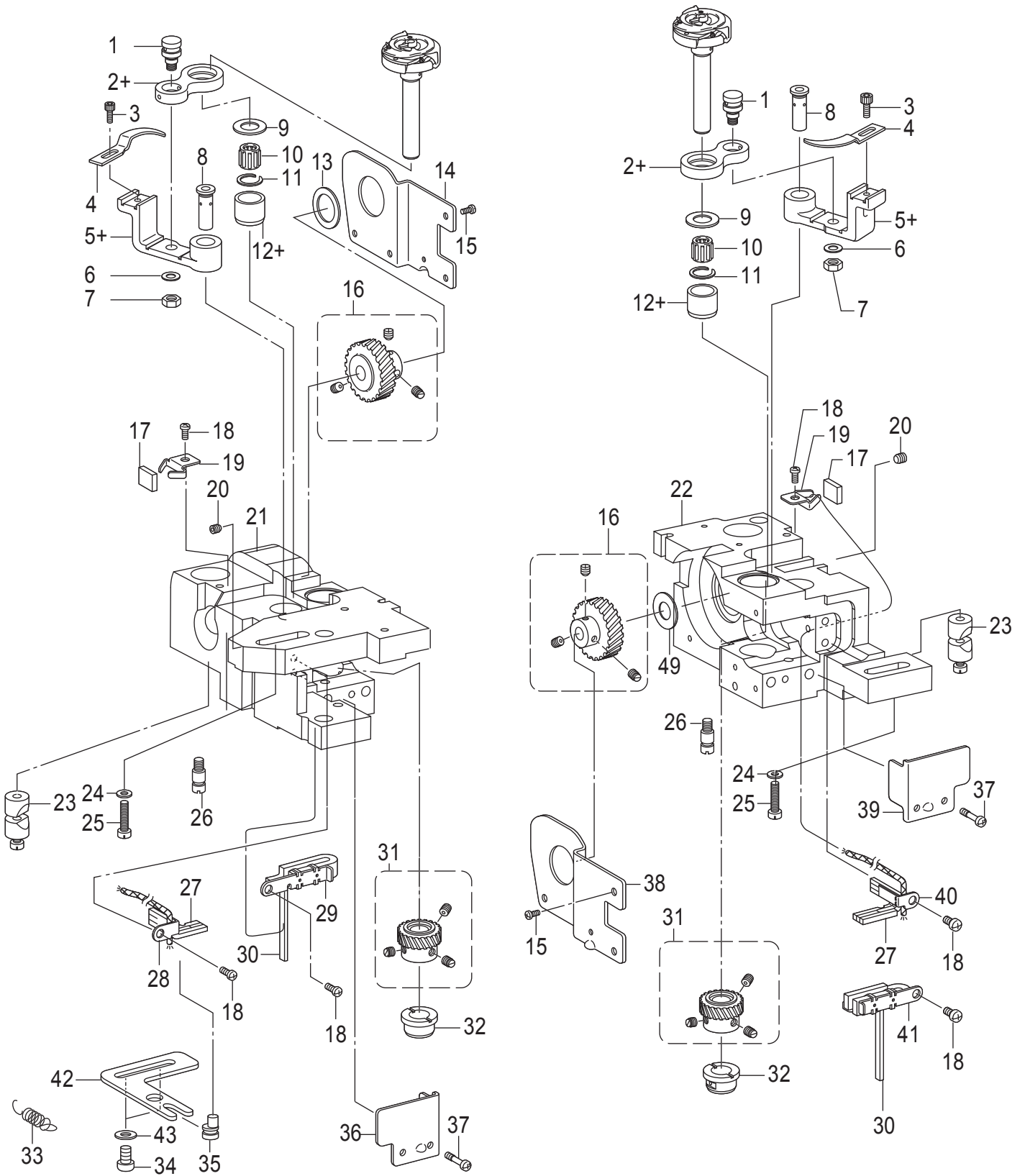
序号	图号	数量	零件名称	NAME OF PARTS
1	124070101	2	紧圈	SET SCREW COLLAR
2	012600636	4	螺钉M6×0.75-6	SCREW PAN M6×0.75-6
3	124070301	1	送布轴套L	BUSH L F-ROCKER SHAFT
4	124070401	1	油毡	FELT
5	124070501	1	送布轴套R	FEED ROCKER SHAFT BUSH R
6	012060632	3	螺钉M6×6	SCREW PAN M6×6
7	124070801	1	送布轴	FEED ROCKER SHAFT
8	124070901	1	滑块组件	FEED BAR SLIDE BLOCK ASSY
9	062300416	1	螺钉M3×4	SCREW PAN M3×4
10	124071201	1	油毡压架	FELT HOLDER
11	124071301	1	油毡	FELT
12	124071401	1	油毡	FELT
13	125071501	1	牙架叉组件TR	FEED BAR TR FORK ASSY
14	124071601	2	轴向垫圈	THRUST RING
15	124071901	1	开叉板	FORKED PLATE
16	124072001	1	调整螺栓	ADJUSTING SCREW
17	062400616	1	螺钉M4×6	SCREW PAN M4×6
18	124072201	1	牙架轴	FEED BAR SHAFT
19	124072301	1	水平送布台臂	FEED ROCKER BASE ARM
20	124072401	2	螺钉M5×12	SCREW PAN M5×12
21	124072601	1	螺钉M3.5	SCREW PAN M3.5
22	021350106	1	螺母M3.5	NUT M3.5

8.定规部件/Gauge parts



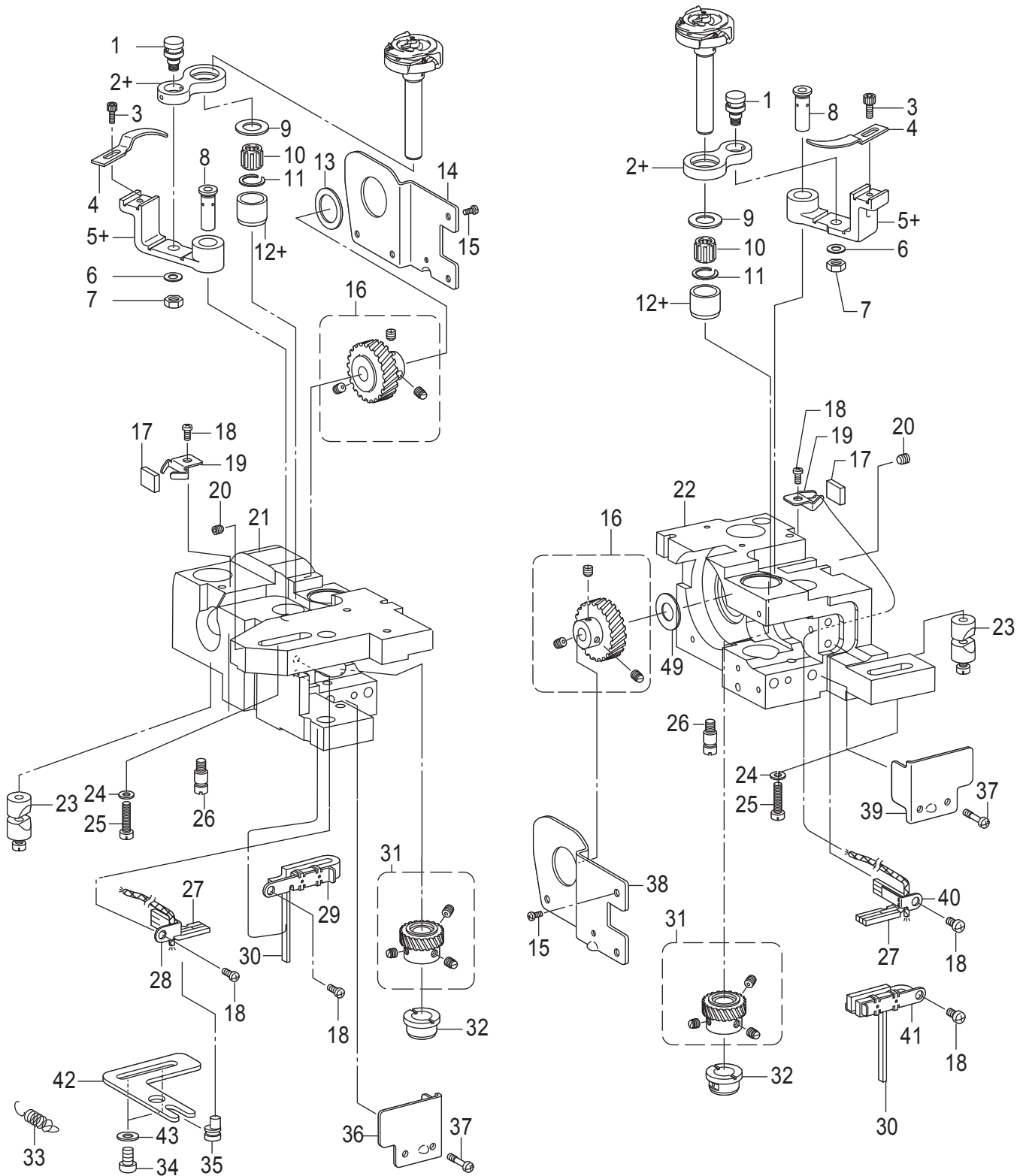
序号	图号	数量	零件名称	NAME OF PARTS
1	124081401	1	针夹组件 1/4	NEEDLE CLAMP ASSY 1/4
2	125081601	1	左针夹组件 1/4	NEEDLE CLAMP ASSY 1/4
3	125081701	1	右针夹组件 1/4	NEEDLE CLAMP ASSY 1/4
4+	115024106	2	机针DP×5 (#14)	NEEDLE DPX5(#14)
4+	115024109	2	机针DP×5 (#18)	NEEDLE DPX5(#18)
5	124080701	1	压脚螺钉M3.5	SCREW M3.5
6	125080801	1	压脚组件	PRESSER FOOT ASSY
7	124080901	1	针板固定螺钉SM4.37	SCREW SM4.37
8	125081001	1	针板-5	NEEDLE PLATE 5
9	124081101	1	针板螺钉SM4.37×40-8	SCREW FLAT SM4.37×40-8
10	124081201	2	送布牙螺钉SM3.18	SCREW W/SOCKET SM3.18×44-7
11+	125081302	1	送布牙2.2 1/4	FEED DOG 2.2 1/4
11+	125081303	1	送布牙 2.4 1/4	FEED DOG 2.4 1/4

9. 旋梭部件/Rotary hookj mechanism



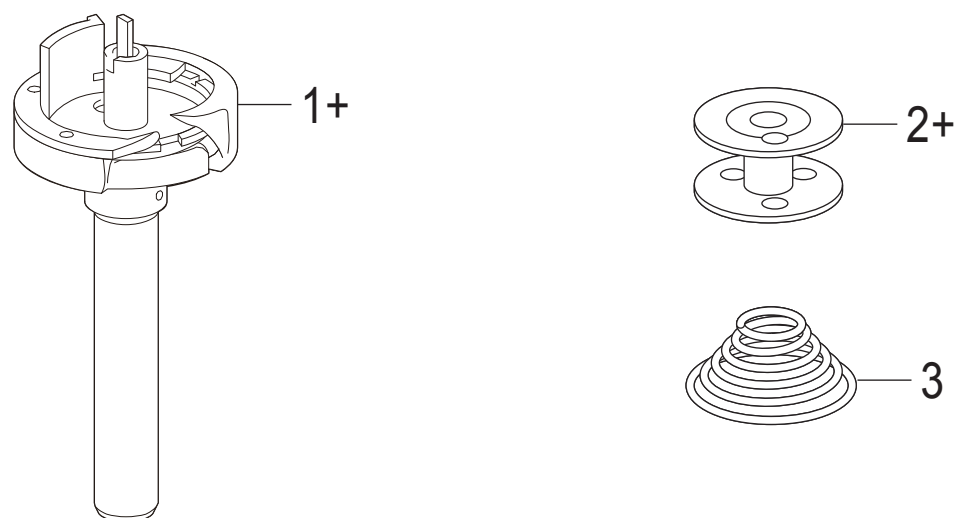
序号	图号	数量	零件名称	NAME OF PARTS
1	124090101	2	分线钩连杆轴	SHAFT O-LINK
2+	124090201	2	分线钩连杆	OPENER LINK
2+	125090201	2	分线钩连杆	OPENER LINK
3	124090301	2	螺钉SM3. 57×40	SCREW SM3. 57×40
4	124090401	4	分线钩	OPENER
5+	124090501	2	分线钩杆	OPENER LEVER
5+	125090501	2	分线钩杆	OPENER LEVER
6	025050332	2	垫圈M5	WASHER M5
7	021500212	2	螺母M5	NUT M5
8	124090801	2	分线钩杆短轴	O-LEVER SHAFT
9	124090901	2	轴向垫圈	THRUST RING
10	124091001	2	滚针轴承	NEEDLE BEARING
11	124091101	2	止动圈	RETAINING RING
12+	124091201	2	旋梭轴套U	ROTARY BUSH U
12+	125091201	2	旋梭轴套U	ROTARY BUSH U
13	124091301	1	垫圈L	THRUST WASHER L
14	124091401	1	旋梭基座盖L	ROTARY HOOK BASE COVER L
15	062300516	8	螺钉M3×5	SCREW M3×5
16	124091601	2	大齿轮组件	SPIRAL GEAR SCREW ASSY
17	124091801	2	油毡	FELT
18	062400616	6	螺钉M4×6	SCREW M4×6
19	124091901	2	油毡架	FELT SUPPORT
20	012501032	2	螺钉M5×10	SCREW M5×10
21	124095701-2	1	左旋梭支架	LEFT-HANDED SHUTTLE BRACKET
22	124095801-2	1	右旋梭支架	RIGHT-HANDED SHUTTLE SUPPORT
23	124092701	2	套管组件	PINCH SLEEVER ASSY
24	124154501	2	垫圈 6	WASHER 6
25	018062532	2	螺钉M6×25	SCREW M6×25
26	124093301	3	定位螺钉	STOPPER SCREW
27	124093701	2	油毡	FELT

9. 旋梭部件/Rotary hook mechanism



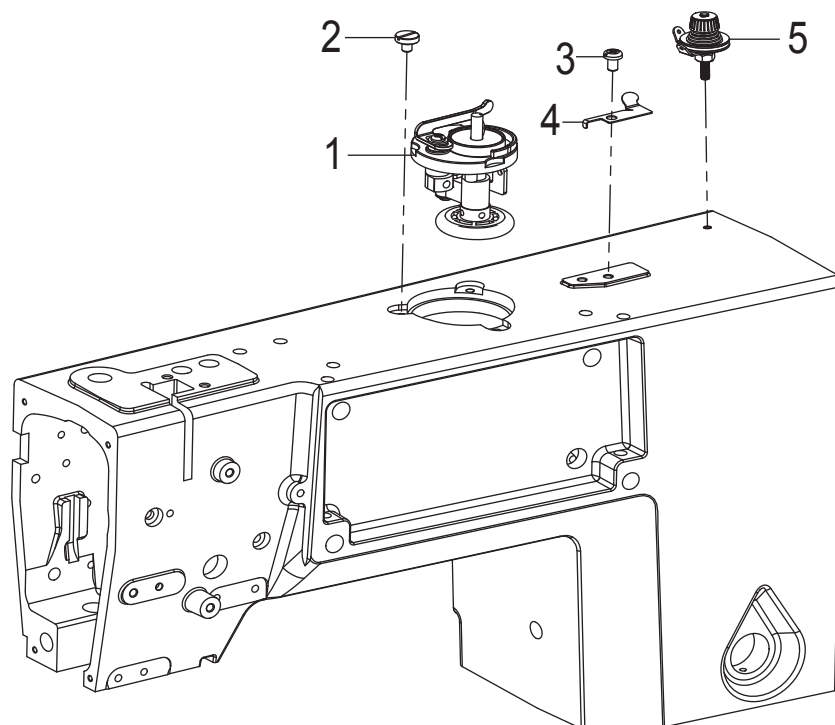
序号	图号	数量	零件名称	NAME OF PARTS
28	124093601	1	油毡支架DL	FELT SUPPORT DL
29	124093801	1	油毡支架UL	FELT SUPPORT UL
30	124095901	2	油毡	FELT
31	124094001	2	小齿轮组件	PINION GEAR SCREW ASSY
32	124094101	2	旋梭轴套D	ROTARY HOOK SHAFT BUSH
33	124094303	1	弹簧	SPRING
34	062061016	4	螺钉M6×10	SCREW M6×10
35	124094601	1	调节轴	NEEDLE UPPER POSITIONING SHAFT
36	124094701	1	旋梭基座盖FL	ROTARY HOOK BASE COVER FL
37	062401216	4	螺钉M4×12	SCREW M4×12
38	124095002	1	旋梭基座盖R	ROTARY HOOK BASE COVER R
39	124095201	1	旋梭基座盖FR	ROTARY HOOK BASE COVER FR
40	124095301	1	油毡支架DR	FELT SUPPORT DR
41	124095401	1	油毡支架UR	FELT SUPPORT UR
42	124094201	1	调节板	NEEDLE UPPER POSITIONING PLATE
43	124093101	2	垫圈 M6	WASHER M6

10.旋梭装置/Rotary hook mechanism



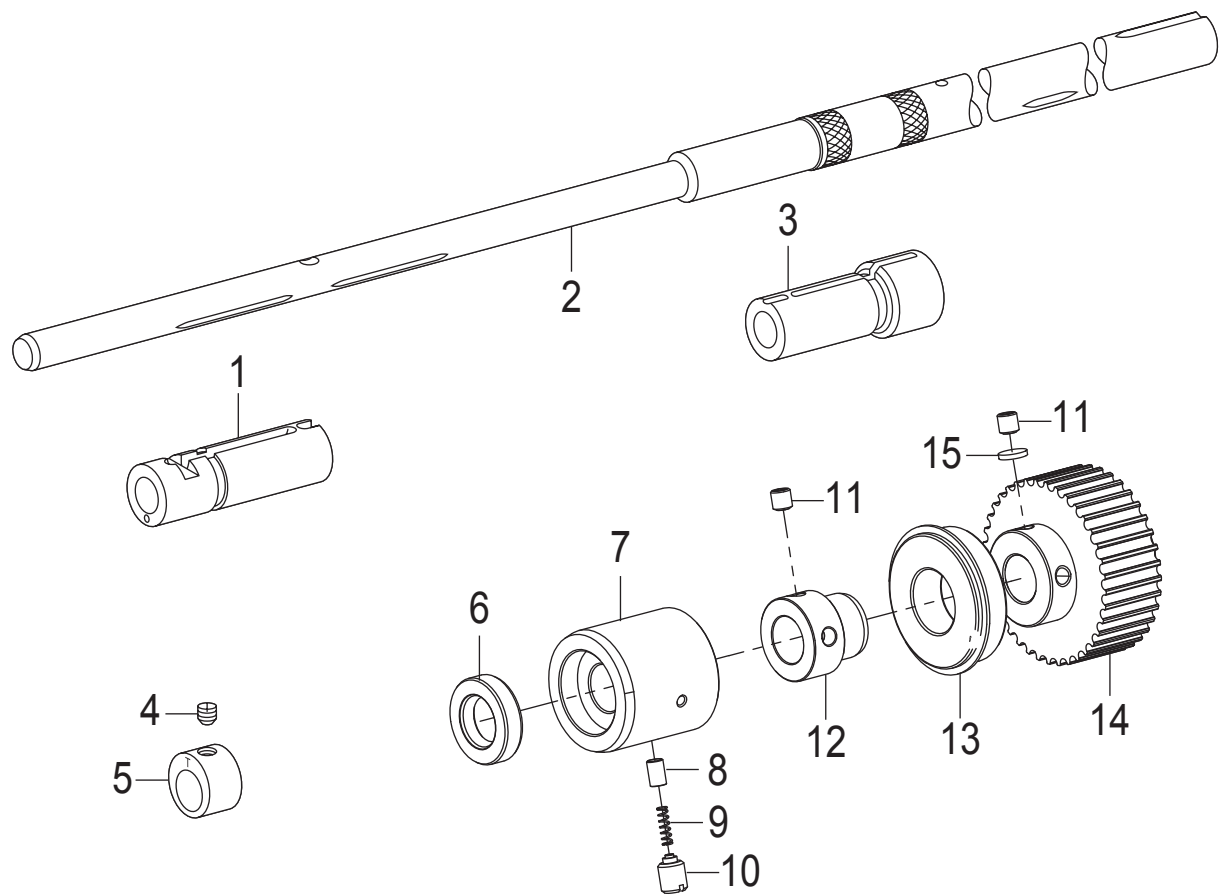
序号	图号	数量	零件名称	NAME OF PARTS
1+	124100106	2	旋梭组件 (小)	ROTARY HOOK BOX ASSY (S)
1+	125100105	2	旋梭组件 (大)	ROTARY HOOK BOX ASYY (B)
3+	124095501	2	梭芯 (小)	BOBBIN (S)
3+	125095501	2	梭芯 (大)	BOBBIN (B)
4	124095601	2	弹簧	ANTI-SPIN SPRING

11.绕线装置/Bobbin winder mechanism



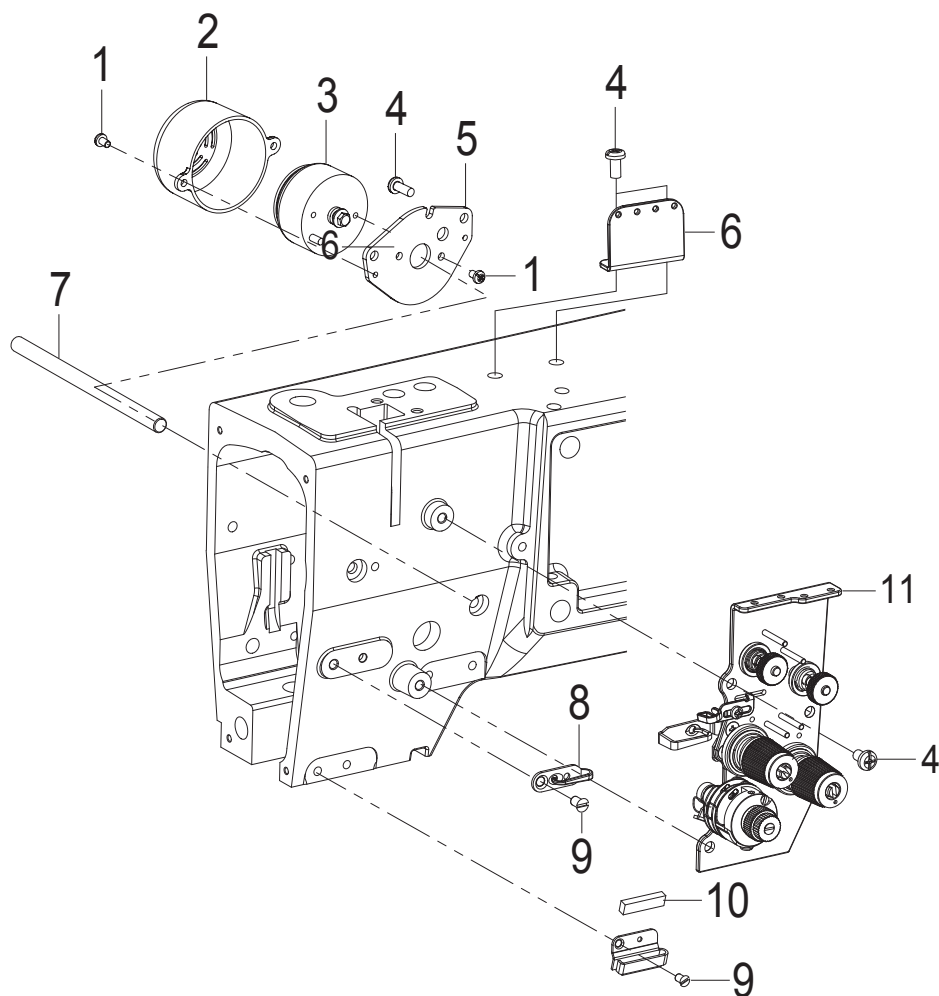
序号	图号	数量	零件名称	NAME OF PARTS
1	115100101	1	绕线器组件	BOBBIN WINDER UNIT
2	115100501	3	固定螺钉M5	BOBBIN WINDER FIXED SCREW
3	062500616	1	螺钉M5×6	SCREW PAN M5×6
4	115100301	1	切刀	KNIFE
5	124140501	1	绕线器夹线组件	BOBBIN WINDER TENSION ASSY

12. 下轴装置/Lower shaft mechanism



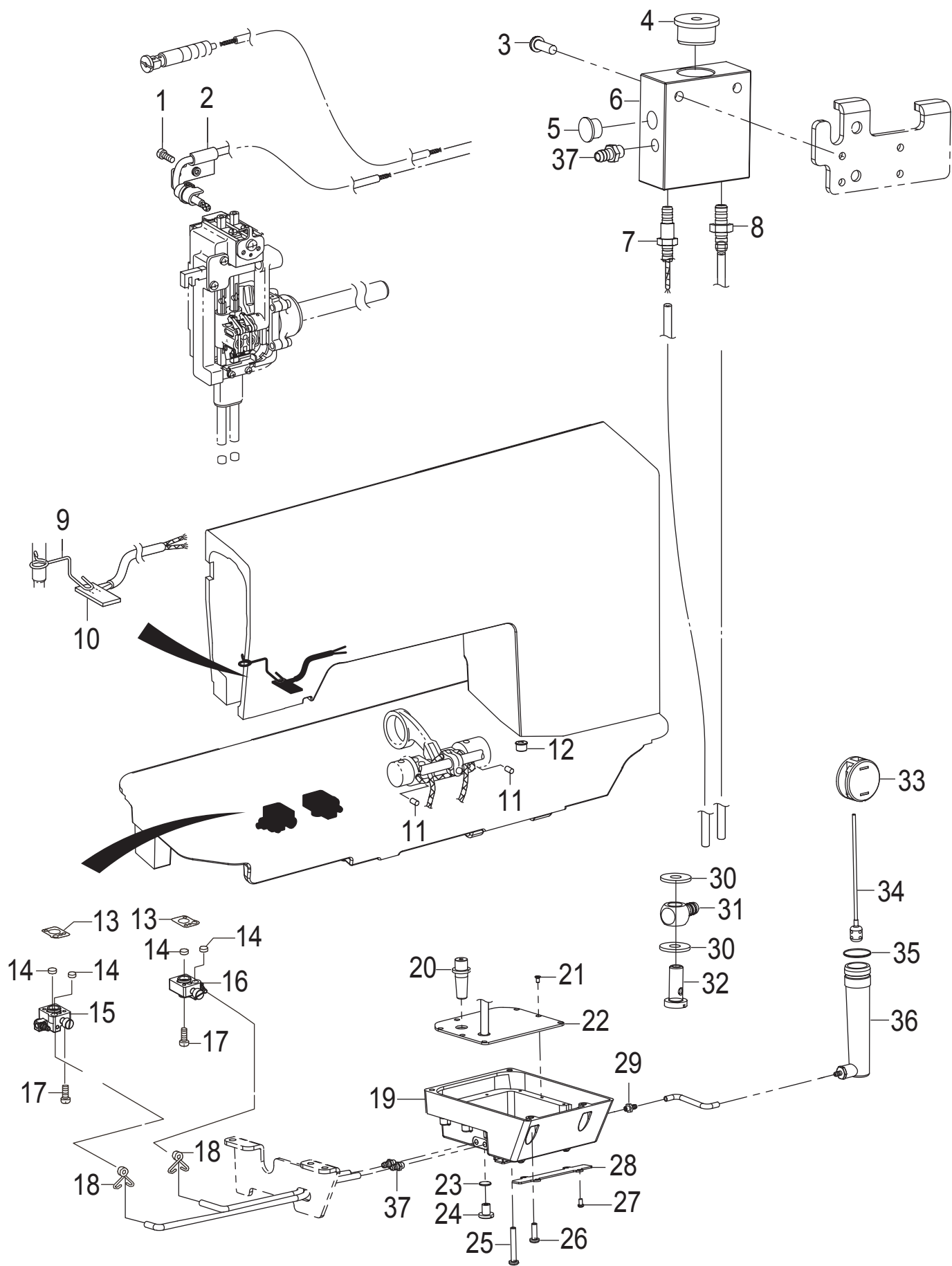
序号	图号	数量	零件名称	NAME OF PARTS
1	124110101	1	旋梭基座轴套L	ROTARY HOOK BASE BUSH L
2	124110201	1	下轴	LOWER SHAFT
3	124110402	1	旋梭基座轴套R	ROTARY HOOK BASE BUSH R
4	124110601	1	螺钉M6	SCREW PAN M6
5	124110501	1	上下偏心轮	F-LIFTING ECCENTRIC WHEEL
6	115024001	1	油封	OIL SEAL
7	124110801	1	下轴中套	LOWER SHAFT MIDDLE SLEEVE
8	115083001	1	柱塞	RUBBER PRESSER
9	115083301	1	柱塞弹簧	RUBBER PRESSER SPRING
10	115083501	1	泵盖螺钉	SCREW
11	012600636	6	螺钉M6×0.75-6	SCREW PAN M6×0.75-6
12	124111201	1	轴承套	BALL BEARING BUSH
13	115024501	1	轴承6004ZZNR	BALL BEARING 6004ZZNR
14	124111501	1	同步轮U	TIMING PULLEY U
15	124111701	4	垫片4.8	WASHER 4.8

13.穿线装置/Threading mechanism



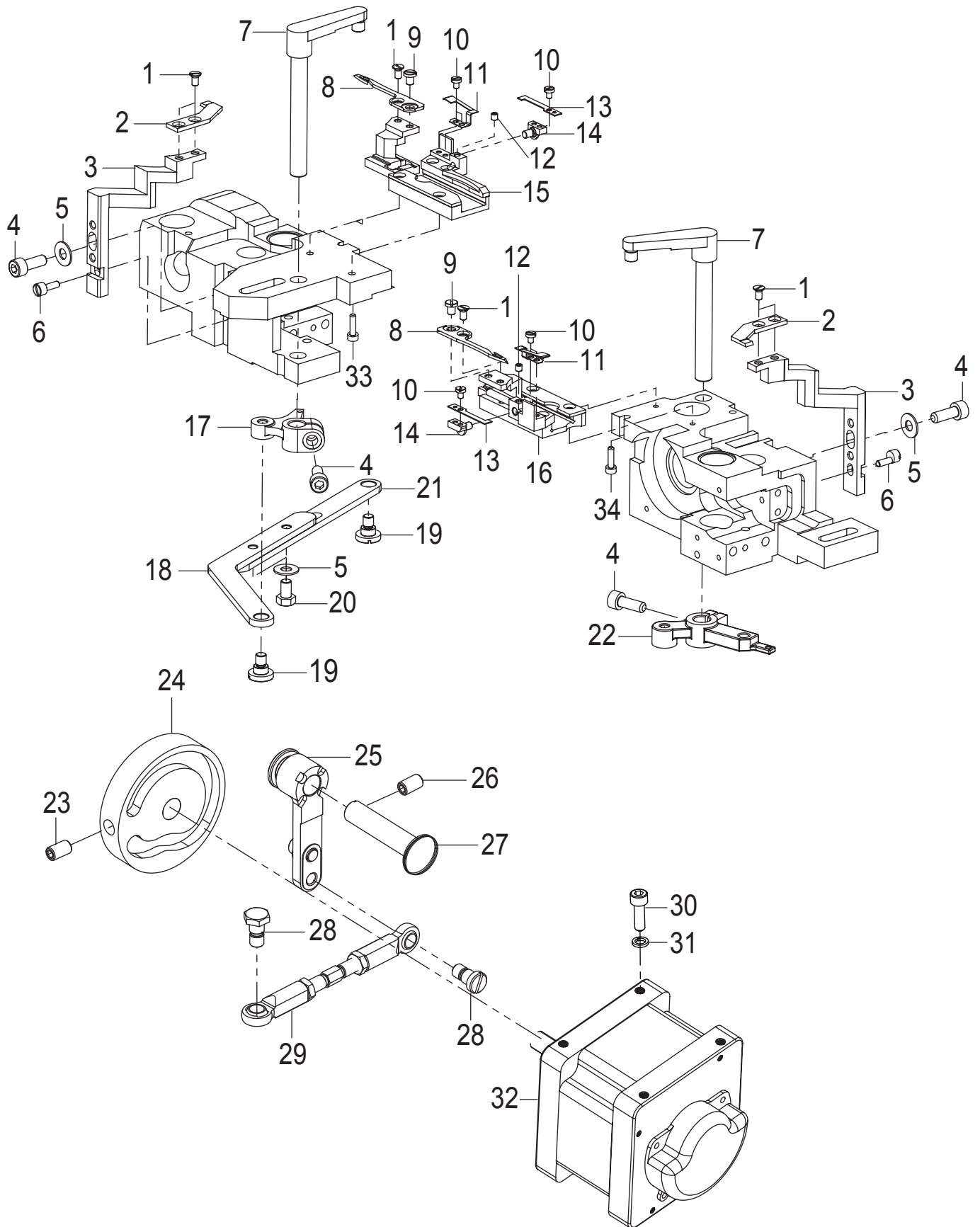
序号	图号	数量	零件名称	NAME OF PARTS
1	062400616	4	螺钉M4×6	SCREW PAN M5×6
2	168070201	1	电磁铁罩	SOLENOID COVER
3	124132101	1	松线电磁铁	TENSION RELEASE SOLENOID
4	062501016	7	螺钉M5×10	SCREW PAN M5×10
5	168070802	1	电磁铁安装板	SOLENOID SETTING PLATE
6	124132501	1	过线板	SPOOL PLATE
7	127130302	1	松线轴	TENSION RELEASE CRANK
8	124131301	1	线导向 M	THREAD GUIDE M ARM
9	124131401	2	螺钉M5×8	SCREW PAN M5×8
10	124131601	1	油毡	FELT
11	124130101	1	面线调节组件	UPPER THREAD TENSION ASSY

14. 供油润滑装置/Lubrication



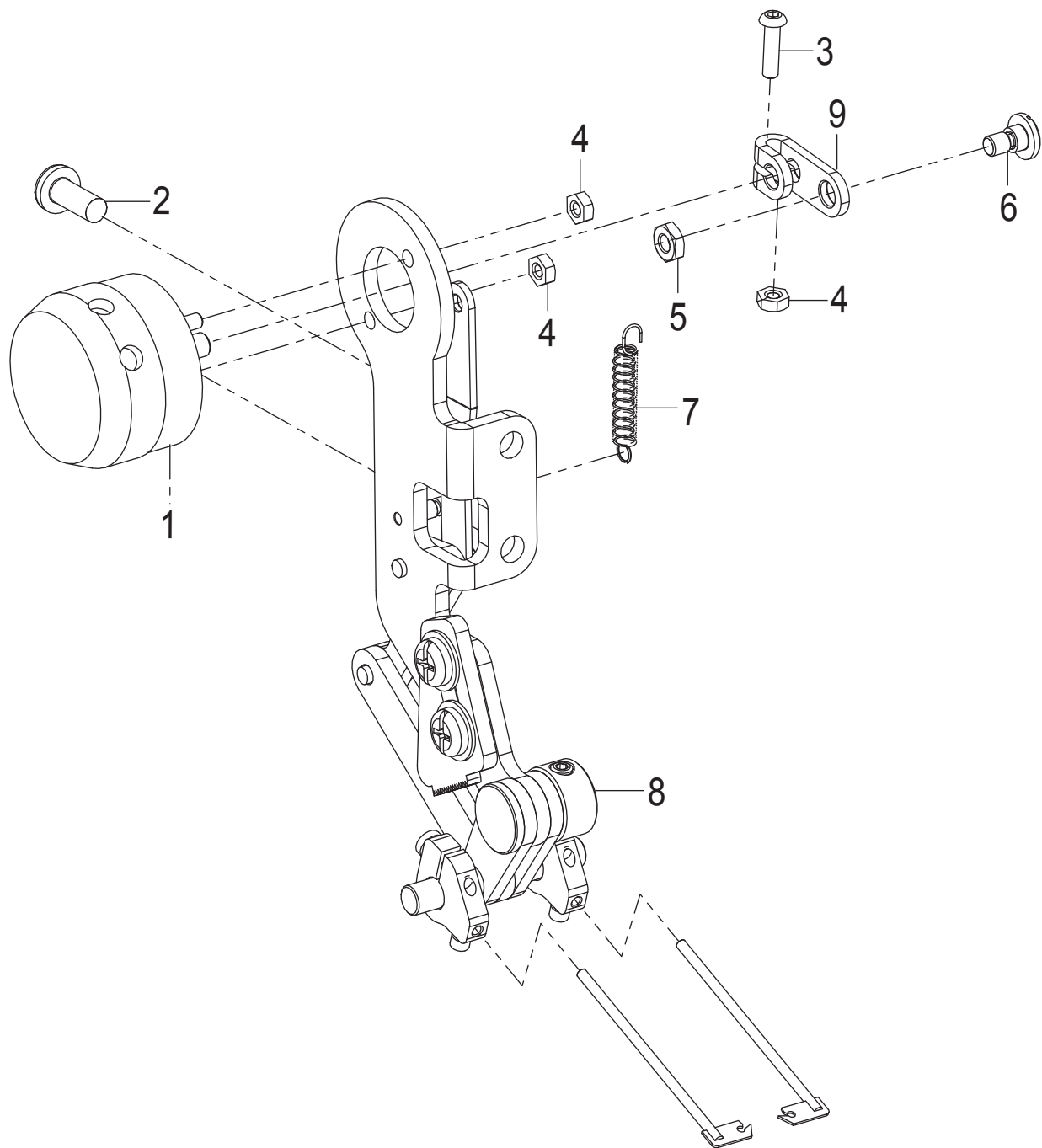
序号	图号	数量	零件名称	NAME OF PARTS
1	062501016	1	螺钉M5×10	SCREW PAN M5×10
2	124120301	1	油管支架	OIL SUPPORT
3	062401016	2	螺钉M4×10	SCREW PAN M4×10
4	101012702	1	电线过线圈	RUBBER CAP
5	115012401	1	橡皮塞8	RUBBER CAP 8
6	124125502	1	机头储油盒	ENGINE OIL BOX
7	168062601	1	油嘴SM5.95	NOZZLE SM5.95
8	124123601	1	油嘴M6×0.75	NOZZLE TUBE M6×0.75
9	124120601	1	油毡压架	FELT SUPPORT
10	124120701	1	油毡	FELT
11	124121801	2	调节器油毡	FELT
12	124121701	2	加油橡皮塞	RUBBER CAP
13	124125001	2	旋梭基座D垫片	ROTARY HOOK BASE D PACKING
14	124124701	4	旋梭油毡	FELT
15	124123701	1	左集油器组件	OIL COLLECTOR ASSY L
16	124123801	1	右集油器组件	OIL COLLECTOR ASSY R
17	062401216	4	螺钉M4×12	SCREW PAN M4×12
18	124121401	6	油管夹	OIL PIPE CLAMP
19	124122901	1	油盒	OIL BOX
20	124122501	1	长橡胶柱	RUBBER CAP LONG
21	064300612	8	螺钉M3×6	SCREW PAN M3×6
22	124122701	1	油盒盖	OIL BOX COVER
23	115080801	1	O形圈P8	O RING P8
24	115080901	1	螺钉M8	SCREW PAN M8
25	018504032	2	螺钉M5×40	SCREW PAN M5×40
26	018501632	2	螺钉M5×16	SCREW PAN M5×16
27	062350612	4	螺钉M3.5×6	SCREW PAN M3.5×6
28	124123201	1	电线压板	WIRE PLATE
29	124123901	1	油嘴管M6×0.75	NOZZLE TUBE M6×0.75
30	124125401	2	供油嘴垫片	NOZZLE GASKET
31	124125301	1	供油嘴	OIL NOZZLE
32	124125201	1	供油螺钉	SUPPLY SCREW
33	124120901	1	油量视窗	OIL GAGE WINDOW
34	124121001	1	浮球组件	FLOAT ASSY
35	115040701	1	O形圈	O RING
36	124121201	1	副油罐	SUB TANK
37	124123601	3	油嘴M6×0.75	NOZZLE M6×0.75

15.切线装置/Thread trimmer mechanism



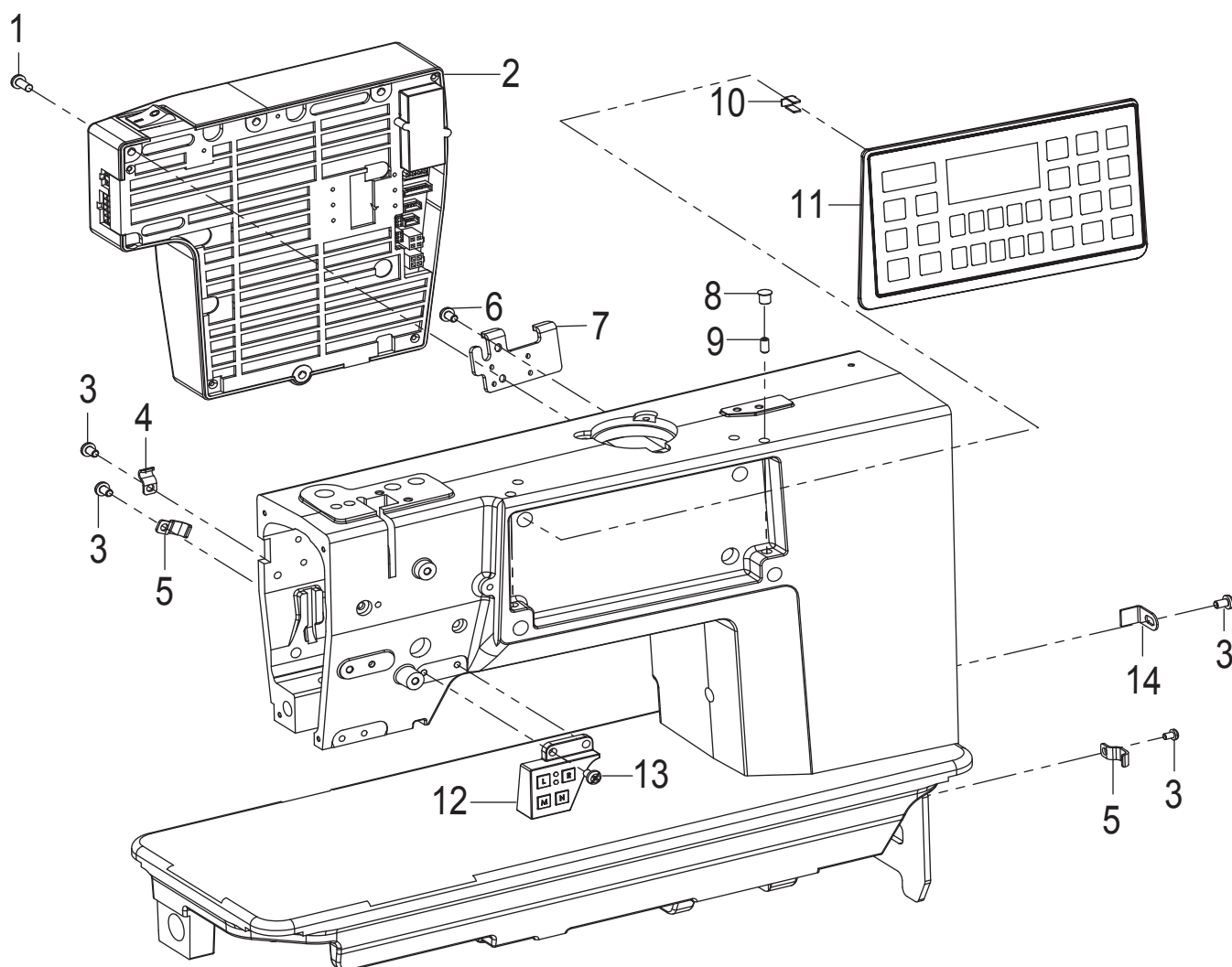
序号	图号	数量	零件名称	NAME OF PARTS
1	124155901	6	螺钉SM3. 57×40-5	SCREW PAN SM3. 57×40-5
2	124156001	2	定刀	FIXED KNIFE
3	124156101	2	定刀架	FIXED KNIFE BASE
4	018501032	6	螺钉M5×10	SCREW PAN M5×10
5	025050236	4	垫片M5	WASHER PLAIN M5
6	124156201	2	调节销	FIXED KNIFE BASE ADJUST
7	124156301	2	动刀杆	KNIFE BASE SHAFT ASSY
8	124156401	2	动刀	DRIVING KNIFE
9	124156501	2	螺钉SM3. 57×40-4.5	SCREW PAN SM3. 57×40-4.5
10	124156601	6	螺钉M2.5×4	SCREW PAN M2.5×4
11	124156702	2	弹簧片	CLAMP
12	012300332	2	螺钉M3×3	SCREW PAN M3×3
13	124156801	2	弹簧片	CLAMP SPRING
14	124156901	2	弹簧片安装支座	CLAMP SRING BASE
15	124157001	1	动刀座组件L	KNIFE SUPPORT ASSY L
16	124157101	1	动刀座组件R	KNIFE SUPPORT ASSY R
17	124157201	1	切线杠杆L	THREAD TRIMMER LEVER L
18	124157301	1	切线连杆L	T-TRIMMER CONNECTING ROD L
19	124150801	2	轴位螺钉M5	SHOULDER SCREW M5
20	017500812	2	螺钉M5×8	SCREW PAN M5×8
21	124150601	1	切线连杆R	T-TRIMMER CONNECTING ROD R
22	124157501	1	切线杠杆R	THREAD TRIMMER LEVER R
23	014601016	2	螺钉M6×0.75	SCREW PAN M6×0.75
24	124152302	1	切线凸轮	THREAD TRIMMER CAM
25	124052802	1	抬压曲柄连杆组件	P-BAR LIFTER CRANK LEVER
26	012500536	3	螺钉M5×5	SCREW PAN M5×5
27	124052902	1	抬压曲柄连杆销	PIN
28	124151101	2	段螺钉M6	SHOULDER SCREW M6
29	124159002	1	球接头组件	ROUND JOINT ASSY
30	018501632	4	螺钉M5×16	SCREW PAN M5×16
31	028050246	4	弹簧垫圈5	WASHER 5
32	124152503	1	步进电机86	MOTOR
33	018300832	3	螺钉M3×8	SCREW PAN M3×8
34	018301632	1	螺钉M3×16	SCREW PAN M3×16

16.扫线装置/Thread wiper mechanism



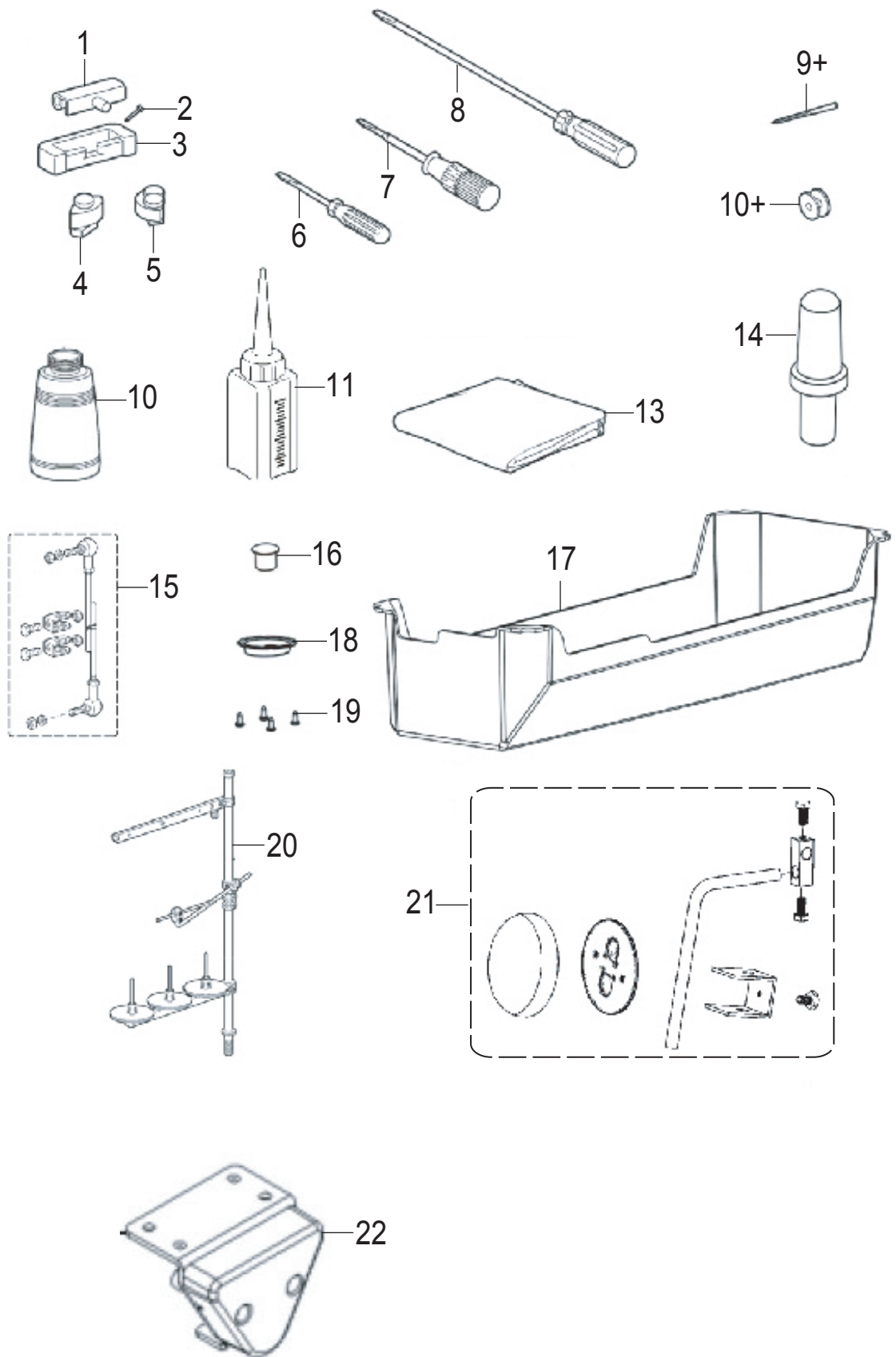
序号	图号	数量	零件名称	NAME OF PARTS
1	124160101	1	扫线电磁铁组件	THREAD WIPER SOLENOID ASSY
2	062501016	2	螺钉M5×10	SCREW PAN M5×10
3	124160301	1	螺钉M3×12	SCREW PAN M3×12
4	021300306	3	螺母M3	NUT M3
5	021400306	1	螺母M4	NUT M4
6	124160501	1	轴位螺钉M4	SHOUJDER SCREW M4
7	124094302	1	弹簧	SPRING
8	124160801	1	扫线连杆组件	THREAD WIPER ROD
9	124160201	1	扫线电磁铁曲柄	SWEEP ELECTROMAGNET CRANK

17.电控装置/Electronic control device



序号	图号	数量	零件名称	NAME OF PARTS
1	018502032	3	螺钉M5×20	SCREW PAN M5×20
2	168101501	1	控制箱组件	ELECTRONIC CONTROL BOX ASSY
3	062501016	4	螺钉M5×10	SCREW PAN M5×10
4	115131001	1	线夹U1	FASTENING BAND U1
5	115114801	2	线夹U2	FASTENING BAND U2
6	124131401	2	螺钉M5×8	SCREW PAN M5×8
7	124170501	1	油盒安装板	CORD HOLDER
8	124170401	4	橡皮塞7	RUBBER CAP 7
9	012600636	4	螺钉M6×0.75-6	SCREW PAN M6×0.75-6
10	115130801	4	操作面板支座	OPERATE THE PANEL SUPPORT
11	124170102	1	操作盒组件	OPERATION BOX ASSY
12	124171001	1	按钮组件	BUTTON COMPONENT
13	062501216	2	螺钉M5×12	SCREW PAN M5×12
14	102110302	1	电线夹	FASTENING BAND

18.附件/Accessories



序号	图号	数量	零件名称	NAME OF PARTS
1	115150401	2	机头铰链	HEAD HINGE
2	115151701	6	钉	NAIL
3	115150501	2	机头铰链套	RUBBER CUSHION
4	115150601	2	头部防震垫 L	HEAD CUSHION L
5	115150801	2	头部防震垫 R	HEAD CUSHION R
6	115151601	1	螺丝刀 (小)	SCREW DIRVER S
7	115151701	1	螺丝刀 (中)	SCREW DIRVER M
8	115151801	1	螺丝刀 (大)	SCREW DIRVER B
9+	115024106	4	机针DP×5 14	NEEDLE DP×5 14
9+	115024109	4	机针DP×5 18	NEEDLE DP×5 18
10+	124095501	2	梭芯(小)	BOBBIN S
10+	125095501	2	梭芯(大)	BOBBIN B
11	124181101	1	油壶	OILER
12	115151001	1	中号油壶	OIL TANK ASSY
13	6040101	1	机头罩	HEAD COVER
14	169140901	1	机头撑杆	HEAD REST
15	115151901	1	连杆组件	CONNECTING ROD ASSY
16	124170401	1	橡皮塞7	RUBBER CAP 7
17	124181801	1	油盘	OIL PAN
18	124181901	1	放油口	DRAIN
19		4	螺钉ST3.5-9.5	SCREW ST3.5-9.5
20	124182801	1	线架3DR	THREAD STAND ASM 3DR
21	115060101	1	膝控组件	KNEE LIFTER ASSY
22	169050101	1	电子膝靠组件	ELECTRONIC